

The units are axial fans designed for exhaust ventilation of small and medium sized rooms. Fans are made of white plastic.

Package includes:

- Fan
- Adjustable sleeve
- Exterior gravity louver damper
- Screws with anchors
- User manual

Installation Options are shown in figures 1-2. Electrical data and connections are shown in figure 3.

Fans are compatible with 5" (125mm) duct openings. Fans can be mounted horizontally or vertically, (Figures 1-2): through the wall, to the ceiling, into a ventilation shaft, or to round duct.

Models ending in "M" include occupancy/motion sensor so that the fan automatically turns off when the room is unoccupied after a specified amount of time (adjustable from 2-30 minutes).

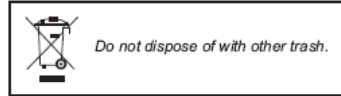
Input: 120V AC 60Hz.

Mounting and connection are shown in figures 1-3. Fans are designed for long-term continuous or intermittent operation. Airflow direction is indicated on the fan case. Fans can be operated at ambient temperatures between -40 to 170°F.

Protection rating from access to dangerous parts and water penetration of the TTW-100 is IP34.

Some models may differ slightly from those described in this manual.

Fan surfaces need to be cleaned regularly from dirt and dust (Fig. 14-19). Clean with soft cloth with the usage of water solution and washing agent. Ingress of liquid to electric motor must be avoided. After cleaning the surface must be wiped dry.



### WARRANTY

The TTW-100 fans are ETL listed and labeled to meet U.S. and Canadian standards.

Manufacturer guarantees normal operation of the unit for 1 year from the date of sale subject to the fulfillment of transport, storage, installation, and operating specifications.

If proof of sales date is absent, warranty period is calculated from the production date.

In the occurrence of failure due to faulty equipment during the warranty period, the consumer has the right to exchange it.

The unit can be exchanged by contacting the manufacturer at following address:

American Aldes Ventilation Corporation  
4521 19<sup>th</sup> Street Court E., Bradenton, FL 34203  
Phone: (941)351-3441  
Email: [customerservice@aldes-us.com](mailto:customerservice@aldes-us.com)

Manufacturer is not responsible for damages resulting from the unit or by gross mechanical alteration.

[www.americanaldes.com](http://www.americanaldes.com)

# Electrical

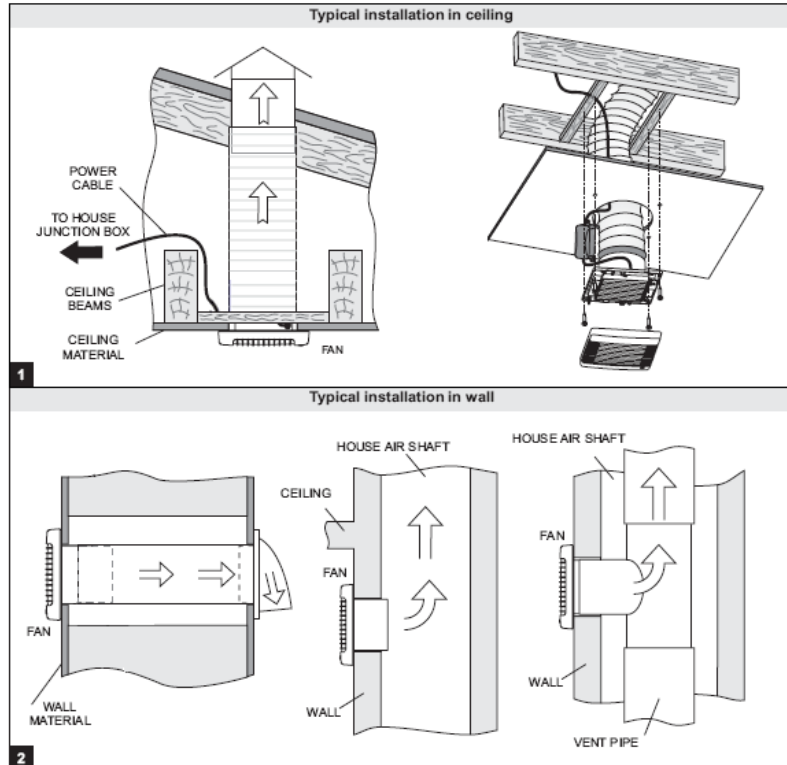
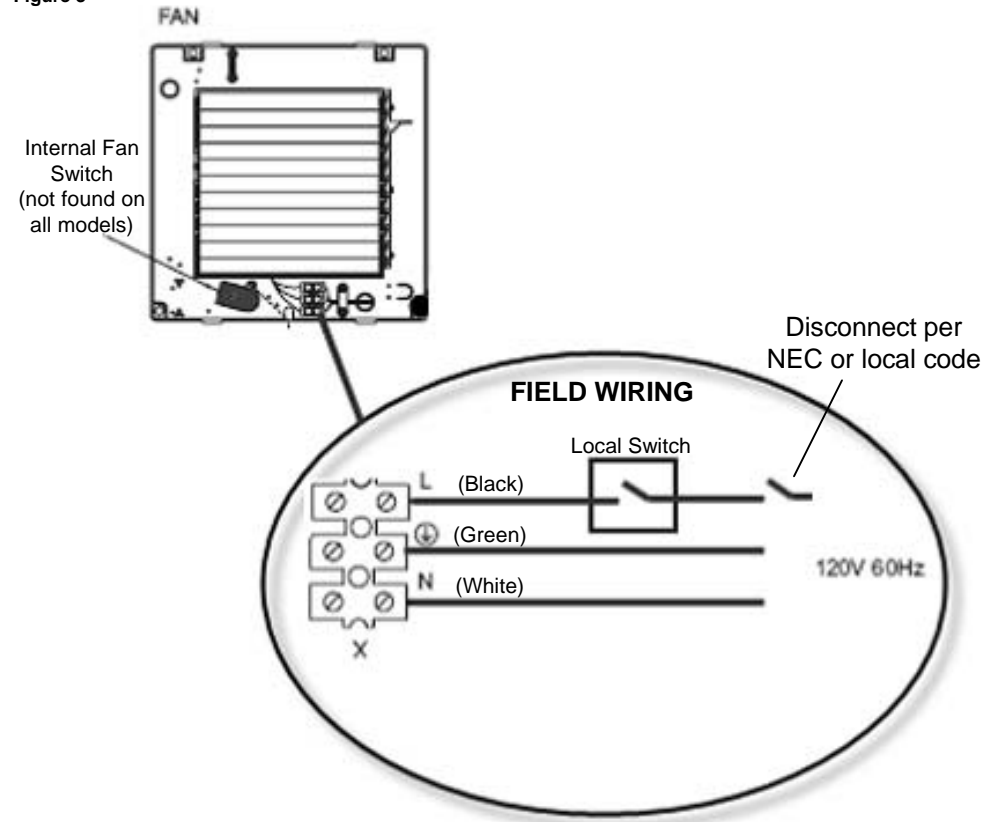


## ELECTRICAL DATA

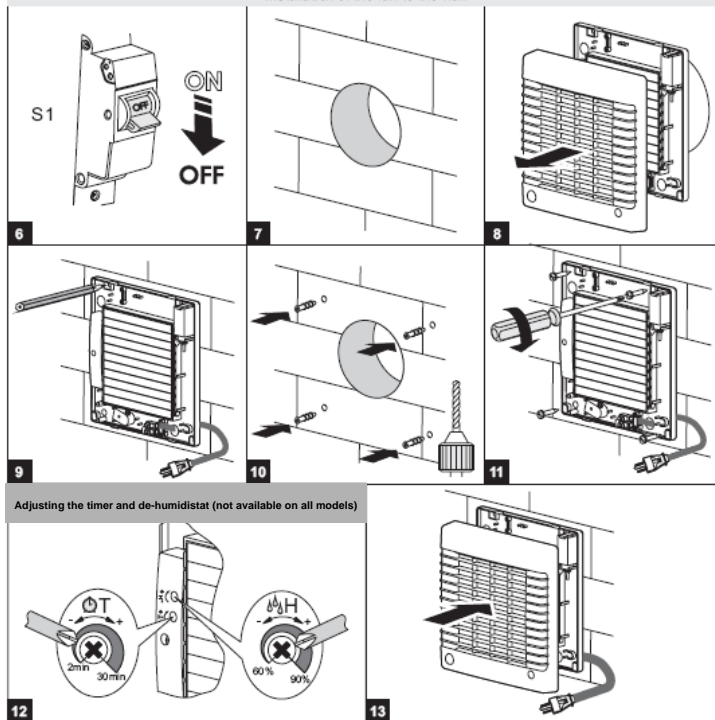
MODEL	VOLTS	MAX AMPS	MAX WATTS
TTW-100	120	0.22	19
TTW-100M	120	0.22	19
TTW-100H	120	0.22	19

Provide disconnect switch in vicinity of fan to permit servicing fan in accordance with NEC and local codes.

Figure 3

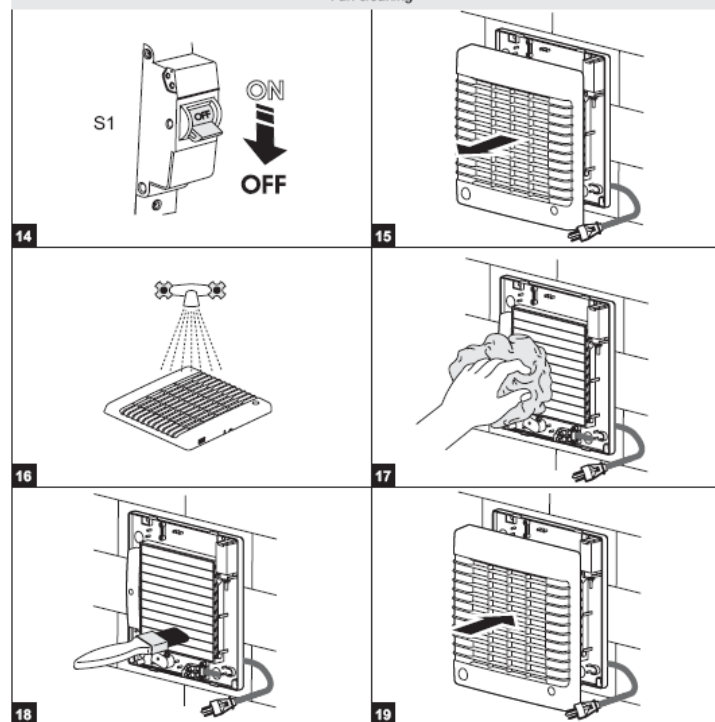


Installation of the fan to the wall



Cord set not included on all models.

Fan cleaning



ttw-100\_fan\_iom\_0510

# Installation and Maintenance Manual

# TTW – 100 Through The Wall Fan



**AMERICAN**  
**aldes**  
VENTILATION CORPORATION

[www.americandaldes.com](http://www.americandaldes.com)

EN

READ AND SAVE THESE INSTRUCTIONS

**WARNING:**

TO REDUCE THE RISK OF FIRE, ELECTRIC SHOCK, INJURY TO PERSONS, READ THE INSTRUCTIONS CAREFULLY.

1. Use this unit only in the manner intended by the manufacturer. If you have questions, contact the manufacturer.
2. Before servicing or cleaning the unit, switch off the power at the service panel and lock it to prevent power from being switched on accidentally. When the power can not be locked securely, fasten a prominent warning device such as a tag to the service panel.
3. Installation work and electrical wiring must be done by qualified person(s) in accordance with all applicable codes and standards, including fire codes and standards.
4. Sufficient air is needed for proper combustion and exhausting of gasses through the flue (chimney) of fuel burning equipment (if present) to prevent back-drafting. Follow the heating equipment manufacturer's guidelines and safety standards such as those published by the National Fire Protection Association (NFPA), and the American Society for Heating, Refrigeration and Air-conditioning Engineers (ASHRAE), and the local code authorities.
5. When cutting or drilling into a wall or ceiling, do not damage electrical wiring and other concealed utilities.
6. Fans with ducts must always be vented to the outdoors.
7. This unit may have sharp edges. Use caution to avoid being cut while installing and cleaning.
8. This unit must be grounded.

**CAUTION!**

1. For general ventilation use only. For use in non-fire rated installations only. Do not use to exhaust hazardous or explosive materials or vapors. Do not install in a cooking area.
2. Install in interior wall, at least 7 feet above the floor.
3. To avoid motor damage and/or noise from an imbalanced impeller, keep drywall spray, construction dust, etc. off power unit.
4. Before installation inspect fan housing for loose parts resulting from shipping and handling that may cause damage when fan is operated.
5. Please read the specification label on the product for further information and requirements.
6. Not for installation by children or any person who is unable to follow these safety guidelines.
7. Provide separate wall switch rated for motor duty, 120V 1A.
8. Do not close or block unit inlets and outlets in order to allow optimal air passage. Do not sit or put objects on the unit.
9. Before installation the fan must be properly stored indoors and protected from water damage.