

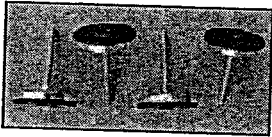
# Leveling Feet Kit, Part No. 4026450 or Leveling Casters Kit, Part No. 4026607

## 1.1 Installing Leveling Feet or Casters

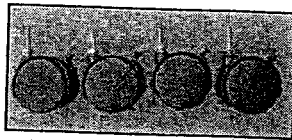
It is important to level your dehumidifier for proper draining.

(See Section 2.1, Figure 4)

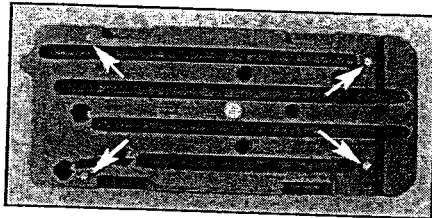
See Figures 2 and 2a for installing leveling feet.



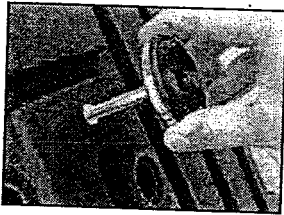
**Figure 1:**  
Four leveling feet



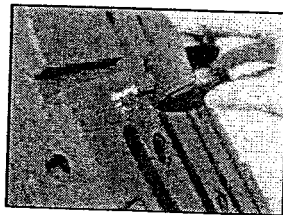
**Figure 1a:**  
Four casters.



**Figure 2:** Insert leveling feet or casters in locations.



**Figure 2a:** Screw each leveling foot in ten revolutions.



**Figure 2b:** Screw each caster in ten revolutions.

### Installing Leveling Feet or Casters

1. Lay down a protective pad (pillow, blanket, etc.).
2. Carefully turn unit onto side opposite filter opening and drain port.
3. Align leveling foot or caster shaft with one of the four threaded hole locations as shown in Figure 2.
4. Screw each leveling foot or caster in ten revolutions.
5. Carefully bring unit to upright position. Wait 10 minutes before operating.
6. Level unit for proper drainage as described in section 2.1.4 (Page 2) of this manual.

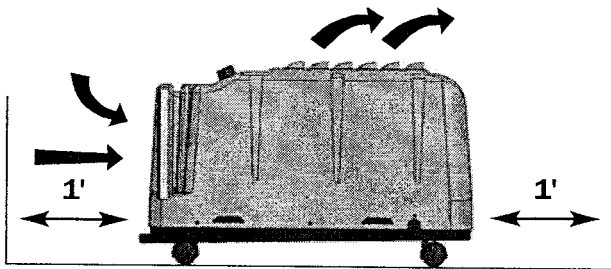
---

## 2 Installation of Unit

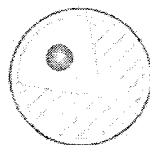
### 2.1 Location

This dehumidifier can be installed in a variety of locations to meet the owner's needs, but should be installed directly in the area to be dehumidified. Other considerations include:

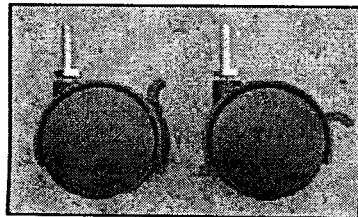
1. Providing access to a 115 VAC power outlet (10' power cord is provided).
2. Locating near a floor or other suitable drain (8' drain hose included).
3. Do not install the dehumidifier with the intake or exhaust of the unit within 1' of a wall or other obstruction. Do not place the unit where curtains or debris can be drawn onto the intake and restrict airflow. Do not operate in standing water or place the unit near open water. Refer to Figure 5.
4. The dehumidifier drains via a gravity system. A level indicator has been included near the intake of the unit. To ensure the unit will drain properly, the unit should be positioned so the level bubble appears in the non-shaded area of the level indicator as shown. Refer to Figure 6. If the unit is placed on an unlevel surface, adjust leveling feet using a crescent wrench or open wrench (7/16" for feet, 9/16" for casters). Move handle end of wrench from left to right to lower one corner of the dehumidifier. Adjust all four feet underneath the unit until bubble in the level dial is in the correct position. If you have the casters lock each caster to prevent free rolling see Figure 5. If you have the casters, lock each caster to prevent free rolling. See Figure 5. Failure to level the unit may result in leakage or improper drainage. See Section 3.2 of your owner's manual regarding drain hose installation.



**Figure 3:**  
Installing Sani Dry CSB  
in area with proper clearance.



**Figure 4:** Level bubble should be in  
indicator area for proper draining of  
unit.



Unlocked      Locked

**Figure 5:** To prevent movement,  
engage the lock on each caster  
by moving the switch to the  
lower position.