



NOW FEATURING
AIRTIGHT METAL FAN HOUSING

SEPTEMBER 2009



Fantech

BATH VENTILATION SOLUTIONS



PRODUCT CATALOG

IMPROVING INDOOR AIR QUALITY THROUGH BETTER VENTILATION

www.fantech.net

Enjoy the Luxury of a Quiet Bath Fan



The Ultimate in Design Flexibility and Quiet Operation!

Don't let the roar of a noisy bath fan disrupt your peace and quiet. Choose an ultra-quiet, energy efficient Fantech Premium Bath Fan to protect your bath from the damaging effects of mold and mildew.

A New Level of Flexibility

Unlike standard exhaust fans, the motor of a Fantech fan mounts in a location away from the living area such as an attic. Small unobtrusive Ceiling Grilles, with or without lights, can be mounted in multiple locations over the shower, the toilet and/or the tub then ducted to the remote fan to quickly and efficiently whisk away moisture, steam and odors. One fan can also be used to ventilate two bath-to-back baths.



Vent Only Ceiling Grille



Ceiling Grille with Dimmable Halogen Light



Ceiling Grille with Energy Star Compact Fluorescent Light

Look for the Energy Star Symbol ...

Fantech is proud to partner with Energy Star to provide energy efficient bath ventilation products for your home. In fact, more than **two-thirds of Fantech Premium Bath Fans exceed the minimum standards** required for Energy Star Qualified products.



Minimum Energy Star Requirements:

- Super Quiet Operation
- High Motor Efficacy (CFM/Watt)
100 CFM to 500 CFM; 2.8 CFM/Watt
- Fans with lights should use 70% less energy than conventional models

See Quick View Selection Guide (pages 10 & 11) to easily identify models that are Energy Star qualified.

DID YOU KNOW?

For Improved Indoor Air Quality, HVI (Home Ventilating Institute) recommends that the bath fan be left on for 20-minutes after the use of the bathroom.

ASHRAE (American Society of Heating, Refrigerating and Air Conditioning Engineers) recommends that controls be installed on bath fans for low level continuous or intermittent ventilation. Ventech Programmable Controls can do all that and more! (See back cover for complete description.)



Fantech's Popular Inline Fans Power Our Premium Bath Fans

- External rotor motor by ebm-papst
- Superior CFM at higher static pressure
- 100% speed controllable
- Rated for continuous duty
- Models available for use with 4" and 6" duct

**SEVEN
YEAR
WARRANTY**



Contractor Friendly Installation

Fantech Premium Bath Fans are "flex duct friendly" making installation fast and easy.

We recommend:

1. Use insulated flexible duct. (Insulated flex duct allows sound from the fan to dissipate gradually so that it can not be heard in the bathroom.)
2. Ideally you should have at least 8 feet of flex duct between ceiling grilles and fan.
3. If applicable, use multiple ceiling grilles or ceiling grilles with lights.



New Improved Ceiling Grille Housing Simplifies Installation

- Improved Airtight Design
- Longer Quick-Connect Duct Collar
- Hanger Bars Extend to 24" OC*
- Set Screw Locks Hanger Bars in Position
- Key Hole Mounting Slots
- UL "Wet Location" Rating
- IC "Insulation Contact" Rating

* PB190, PB370, PBV6 hanger bars extend to 16" OC.



Fantech Premium Bath Fans are part of our energy-saving, "Green Ventilation" products designed for a healthier home environment.



All models are UL Listed for use in wet locations. HVI (Home Ventilating Institute) certified for performance. All models are IC Rated.

Premium Bath Fans – Single Grilles



FAN SIZING FOR BATHS UNDER 100 SQ. FT.

According to the guidelines of HVI (Home Ventilating Institute) baths 100 square feet or smaller require one CFM per square foot of bathroom*. To find the square footage simply multiply the length of the bath by the width.

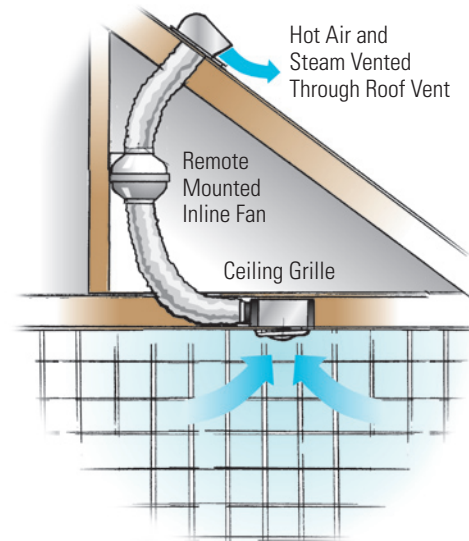
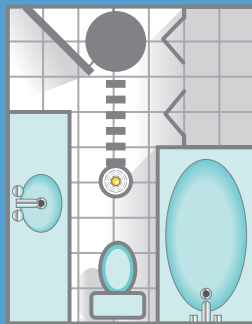
EXAMPLE

7' x 9 Bath = 63 square feet

You will need a 63 CFM fan.

* Minimum 50 CFM

NOTE: For proper airflow in typical installations (when duct losses aren't calculated), use the 0.4"Ps (static pressure) rating point for correct fan selection.



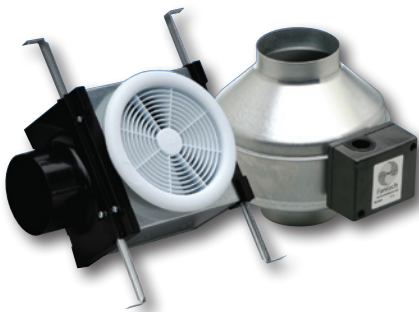
*Clear the air in smaller baths
and powder rooms.*

A small-scale grille mounts in the ceiling while the fan motor mounts in a remote location away from the living area. The result is quiet yet powerful ventilation that is sure to protect your home from the damaging effects of moisture, steam and mold.

**SEVEN
YEAR
WARRANTY**



7" Diameter Ceiling Grille with Halogen Light –
Dimmable for Night Light Setting



PB110

Premium Bath Fan

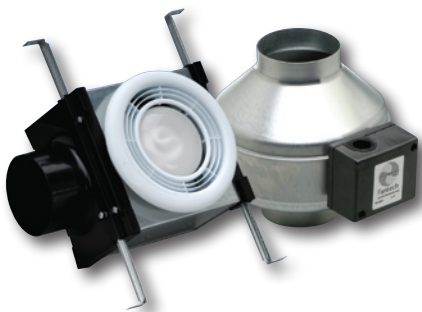
110 CFM fan, one Ceiling Grille and grille housing with damper. Uses 4" duct. Energy Star Qualified.



PB190

Premium Bath Fan

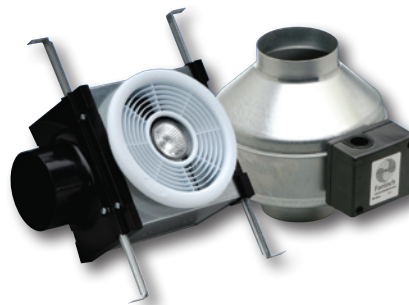
190 CFM fan, one Ceiling Grille, and grille housing with damper. Uses 6" duct. Grille housing fits between 2 x 8 construction. Energy Star Qualified.



PB110F

Premium Bath Fan
with Fluorescent Light

110 CFM bath fan, one Ceiling Grille with Light, grille housing with damper, and 14-watt, instant-on, fluorescent bulb. Uses 4" duct. Energy Star Qualified. UL Listed for wet locations.



PB110H

Premium Bath Fan
with Dimmable Halogen Light

110 CFM bath fan, one Ceiling Grille with Light, grille housing with damper, and 50-watt halogen bulb. Uses 4" duct. UL Listed for wet locations.



Premium Bath Fans – Dual Grilles



FAN SIZING FOR BATHS OVER 100 SQ. FT.

Ventilation for baths over 100 square feet is calculated based on the fixtures in the bath. Allow 50 CFM for each standard toilet, shower or tub. Whirlpool and jetted tubs are calculated at 100 CFM. Add up the CFMs for all fixtures and you'll have the total CFMs required.

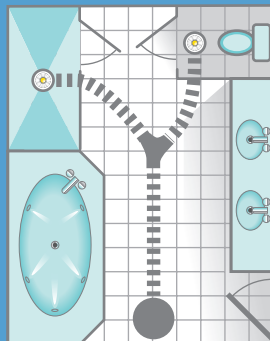
EXAMPLE

11' x 14' Bath = 154 square feet

1 Toilet	50 CFM
1 Shower	50 CFM
1 Jetted Tub	100 CFM
Total	200 CFM

You will need a 200 CFM fan.

NOTE: Fantech recommends that steam showers use a separate fan on a timer so that the fan may be shut off during shower use and then run afterward to dry the shower stall.



PB270-2

Premium Bath Fan with Dual Grilles

270 CFM fan, two Ceiling Grilles, two grille housings with dampers and Y-adapter (4x4x6). Uses 4" and 6" duct. Energy Star Qualified.

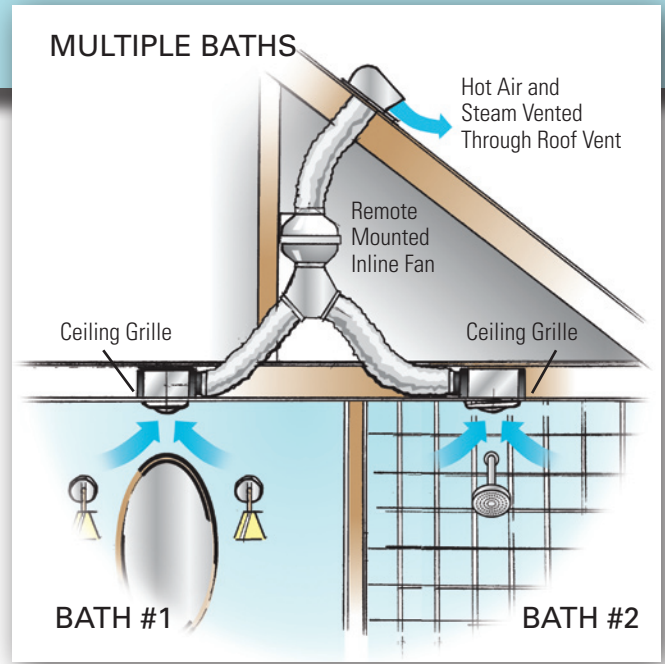


The key to proper ventilation in oversized baths is spot ventilation at the source.

As the trend to larger spa-like bathrooms continues to gain in popularity, the need for proper ventilation becomes more important. Quick removal of moisture at the source will keep your beautiful bath free of mold and the effects of extreme moisture.

Fantech has developed its Premium Bath Fans so that one remote mounted fan motor can effectively ventilate several areas of the bath. Ceiling Grilles or Ceiling Grilles with Lights can be easily positioned over showers, whirlpool tubs, steam showers, toilet and vanity.

**SEVEN
YEAR
WARRANTY**



PB370-2

High Performance Premium Bath Fan with Dual Grilles

370 CFM metal fan, two Ceiling Grilles, two grille housings with dampers and Y-adapter (6x6x6). Uses 6" duct. Grille housing fits between 2x8 construction. Energy Star Qualified.



PB270F-2

Premium Bath Fan – Dual Grilles with Fluorescent Lights

270 CFM fan, two Ceiling Grilles with Lights, two grille housings with dampers, two 14 watt instant-on Fluorescent bulbs and Y adapter (4x4x6). Uses 4" and 6" duct. Energy Star Qualified. UL Listed for wet locations.



PB270H-2

Premium Bath Fan – Dual Grilles with Dimmable Halogen Lights

270 CFM fan, two Ceiling Grilles with Lights, two grille housings with dampers, two 50 watt Halogen bulbs and Y-adapter (4x4x6). Uses 4" and 6" duct. UL Listed for wet locations.



Combination Premium Bath Fans – Dual Grilles

Fantech takes the work out of choosing the right bath fan for your new home or remodeling project.

Premium Bath Combination Units. Combo units include one exhaust fan, one lit and one unlit Ceiling Grille. A single model number provides the exact bath fan components to install an effective two-location exhaust system.

Want to add an additional exhaust location?

Just choose an additional Ceiling Grille with or without a light to turn your one or two location bath fan into a fabulous multiport system. Check out Expansion Grilles with Housings on page 9.

**SEVEN
YEAR
WARRANTY**



PB270FV-2

Premium Bath Fan with One Ceiling Grille with Fluorescent Light and One Vent-Only Ceiling Grille
270 CFM fan, one Ceiling Grille with Light, one Vent-Only Ceiling Grille, two grille housings with dampers, one 14 watt instant-on Fluorescent bulb and Y adapter (4x4x6). Uses 4" and 6" duct. Energy Star Qualified. UL Listed for wet locations.



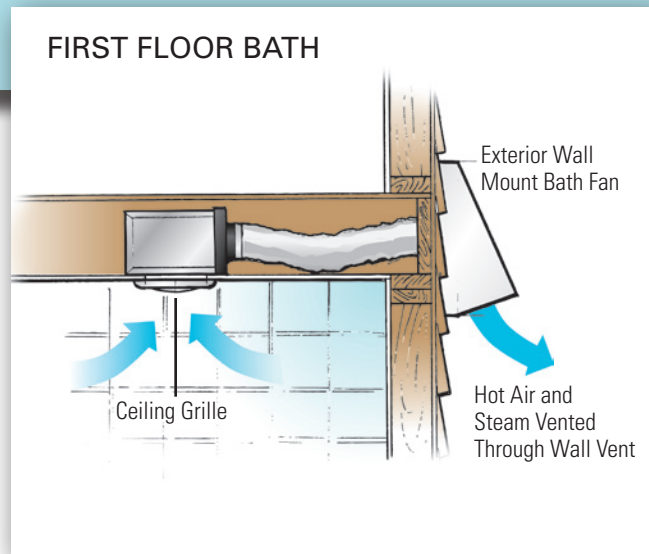
PB270HV-2

Premium Bath Fan with One Ceiling Grille with Dimmable Halogen Light and One Vent-Only Ceiling Grille
270 CFM fan, one Ceiling Grille with Light, One Vent-Only Ceiling Grille, two grille housings with dampers, one 50 watt Halogen bulb and Y adapter (4x4x6). Uses 4" and 6" duct. UL Listed for wet locations.



Exterior Mount Bath Fans

Fantech has expanded its Premium Bath Fan selection to include a trio of models powered by exterior mounted wall fans. An excellent alternative when space is an issue or direct venting to the outside is required. Ideal for homes, condominiums and apartment complexes. Choose vent only or lighted models.



PBW110

Exterior Wall Mount Bath Fan

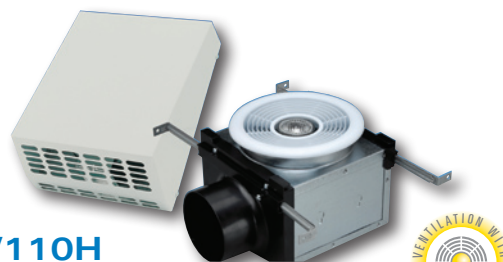
120 CFM fan, one Ceiling Grille and grille housing with damper. Energy Star Qualified.



PBW110F

Exterior Wall Mount Bath Fan with Fluorescent Light

120 CFM fan, one Ceiling Grille, one grille housing with damper and one 14-watt instant-on fluorescent bulb. UL Listed for wet locations. Energy Star Qualified.



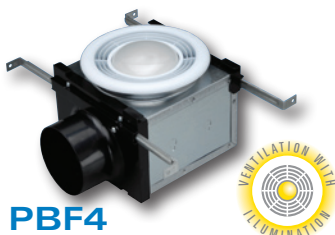
PBW110H

Exterior Wall Mount Bath Fan with Dimmable Halogen Light

120 CFM fan, one Ceiling Grille with Light, grille housing with damper and 50 watt halogen bulb. UL Listed for wet locations.



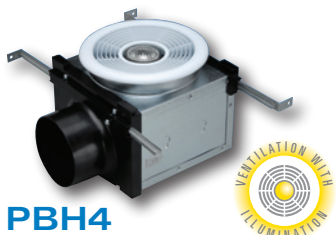
Expansion Grilles with Housings



PBF4

Ceiling Grille & Housing with Fluorescent Light

Includes damper, four hanger bars and 14-watt instant-on fluorescent bulb. Fits between 2x6 construction.



PBH4

Ceiling Grille & Housing with Dimmable Halogen Light

Includes damper, four hanger bars and 50-watt halogen bulb. Fits between 2x6 construction.



PBV4

Ceiling Grille & Housing

Includes damper and four hanger bars. Fits between 2x6 construction.





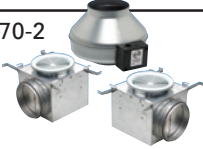








PBV6

Ceiling Grille & Housing

Includes damper and four hanger bars. Fits between 2x8 construction. For use with PB370 fan.

Quick View Selection Guide




Fantech Premium Bath Fan Model Number	CFM @ .2 Static Pressure	CFM @ .4 Static Pressure	Duct Size	Watts @ .2 Static Pressure	CFM/Watt @ .2 Static Pressure		Lamp	SEVEN YEAR WARRANTY
PREMIUM BATH FANS								
PB110 	110	83	4"	20	5.5	Yes	–	Yes
PB190 	190	144	6"	67	3.0	Yes	–	Yes
PREMIUM BATH FANS - DUAL GRILLES								
PB270-2 	270	198	4"/6"	72	3.75	Yes	–	Yes
PB370-2 	370	317	6"	120	3.1	Yes	–	Yes
PREMIUM BATH FANS WITH LIGHTS								
PB110F 	110	78	4"	20	5.5	Yes	14 Watt Instant-on Compact Fluorescent (PBB14)*	Yes
PB110H 	110	78	4"	20	5.5	–	50 Watt Halogen (PBB50)	Yes
PREMIUM BATH FANS WITH LIGHTS - DUAL GRILLES								
PB270F-2 	270	198	4"/6"	72	3.75	Yes	14 Watt Instant-on Compact Fluorescent (PBB14)*	Yes
PB270H-2 	270	198	4"/6"	72	3.75	–	50 Watt Halogen (PBB50)	Yes
PREMIUM BATH FANS - COMBINATION UNITS – DUAL GRILLES – ONE VENT-LIGHT/ONE VENT-ONLY								
PB270FV-2 	270	198	4"/6"	72	3.75	Yes	14 Watt Instant-on Compact Fluorescent (PBB14)*	Yes
PB270HV-2 	270	198	4"/6"	72	3.75	–	50 Watt Halogen (PBB50)	Yes

* The Compact Fluorescent bulb used in Fantech Premium Bath Fans has a color temperature of 2733 Kelvin and CRI of 81. Average bulb life: 10,000 hours. Need replacement bulbs? Order PBB14 for Fluorescent Models; PBB50 for Halogen Models.



Fantech Premium Bath Fan Model Number	CFM @ .1 Static Pressure	CFM @ .2 Static Pressure	Duct Size	Watts @ .2 Static Pressure	CFM/Watt @ .1 Static Pressure	ENERGY STAR	Lamp	SEVEN YEAR WARRANTY
---------------------------------------	--------------------------	--------------------------	-----------	----------------------------	-------------------------------	-------------	------	---------------------





EXTERIOR WALL MOUNT FANS AND FANS WITH LIGHTS

PBW110 	120	112	4"	19	6.3	Yes	–	Yes
PBW110F 	120	112	4"	19	6.3	Yes	14 Watt Instant-on Compact Fluorescent (PBB14)*	Yes
PBW110H 	120	112	4"	19	6.3	–	50 Watt Halogen (PBB50)	Yes

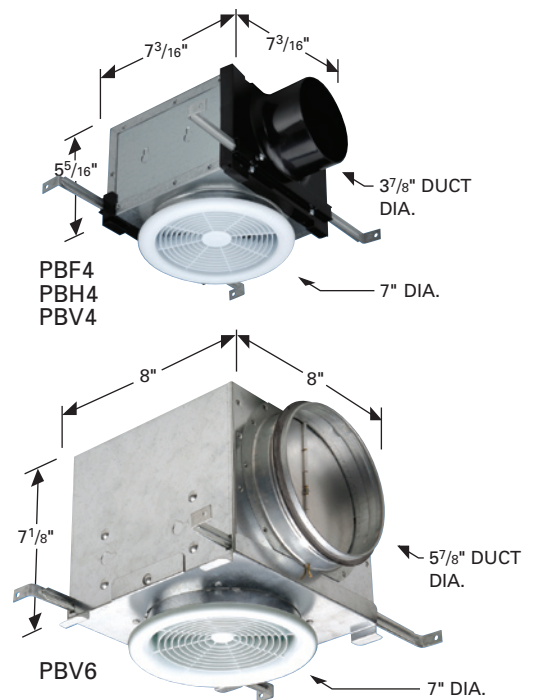
* The Compact Fluorescent bulb used in Fantech Premium Bath Fans has a color temperature of 2733 Kelvin and CRI of 81. Average bulb life: 10,000 hours. Need replacement bulbs? Order PBB14 for Fluorescent Models; PBB50 for Halogen Models.

Fantech Premium Bath Fan Model Number	Duct Size	Housing Dimensions	Lamp	SEVEN YEAR WARRANTY
---------------------------------------	-----------	--------------------	------	---------------------

EXPANSION GRILLES WITH HOUSINGS AND DAMPERS

PBF4 	4"	7 ³ / ₁₆ "L x 7 ³ / ₁₆ "W x 5 ⁵ / ₁₆ "H	14 Watt Instant-on Compact Fluorescent (PBB14)*	Yes
PBH4 	4"	7 ³ / ₁₆ "L x 7 ³ / ₁₆ "W x 5 ⁵ / ₁₆ "H	50 Watt Halogen (PBB50)	Yes
PBV4 	4"	7 ³ / ₁₆ "L x 7 ³ / ₁₆ "W x 5 ⁵ / ₁₆ "H	–	Yes
PBV6 	6"	8"L x 8"W x 7 ¹ / ₈ "H	–	Yes

* The Compact Fluorescent bulb used in Fantech Premium Bath Fans has a color temperature of 2733 Kelvin and CRI of 81. Average bulb life: 10,000 hours. Need replacement bulbs? Order PBB14 for Fluorescent Models; PBB50 for Halogen Models.



FAN DIMENSIONS

Fantech Premium Bath Fan Model Number	Width (Diameter)	Height
PB110	8 ³ / ₄ "	6 ¹ / ₂ "
PB190	11 ³ / ₈ "	6"
PB270	11 ³ / ₈ "	6"
PB370	13 ¹ / ₈ "	6 ⁵ / ₈ "
PBW	10 ¹ / ₄ "	13"

Fantech Recommends the Use of Insulated Flex Duct with Fantech Premium Bath Fans



Adding an additional ceiling grille to your installation? Don't forget to order an extra Y-adapter.

FY Series
Choose from 4" x 4" x 4", 6" x 4" x 4" or 6" x 6" x 6".



Ventilation Solutions for Remodeling/Retrofit



Convert an existing noisy fan with these remodeling solutions:

BFRK100 Bath Fan Retrofit Kit Ideal for 2nd Floor Baths

Kit includes everything you need to convert your noisy exhaust fan into a quiet, efficient fan you can live with. Includes complete instructions, 120 CFM Energy Star Rated Inline Fan, duct reducers, insulated flex duct, wire and accessories. Use with existing fan housing and grille. (Attic access necessary.)

No Drywall To Patch!



RVF4 Exterior Mounted Fan Ideal for 1st Floor Baths

Turn your first floor powder room exhaust fan into a quieter more powerful model simply by moving the fan motor outside the building structure. RVF4 mounts on the side of the home and connects to your existing fan housing and grille. An easy solution to an annoying problem. 110 CFM. Energy Star Rated.



Programmable Controls



VT20M
Ventech Main Control
Features easy-set slide adjustment for fan speed and run-time per hour. Controls are hidden under coverplate. Use with up to three VT20As to allow 20 minute high speed boost in up to four locations. 120V, 60 Hz. Max load 2.5 amps.



VT20M
Ventech Auxiliary Control
Low voltage wire connects Auxiliary Control to Main Control for 20 minute high speed boost in secondary location. Use up to 3 with Main Control.

Standard Controls



SCD5
Speed Control
Decora style slide speed control with on/off. 115 V/5A



FD60EM
Electronic Timer Control
Fan control w/10, 20, 30, 60 minute increments. Decora style switch plate. 115V/20A

Replacement Bulbs



PBB50
Halogen Bulb
50-watt halogen bulb for use in Fantech Premium Bath Fans.



PBB14
Fluorescent Bulb
14-watt compact fluorescent bulb for use in Fantech Premium Bath Fans.

For additional information on items shown above, visit www.fantech.net.



United States
10048 Industrial Blvd.
Lenexa, KS 66215
Phone: 800-747-1762; 913-752-6000
Fax: 800-487-9915; 913-752-6466
www.fantech.net; info@fantech.net

Canada
50 Kanalfakt Way
Bouctouche, NB E4S 3M5
800-565-3548; 506-743-9500
Fax: 877-747-8116; 506-743-9600
www.fantech.ca; info@fantech.ca

Distributed locally by: