



The Push-fit solution for Plumbing and Heating Systems

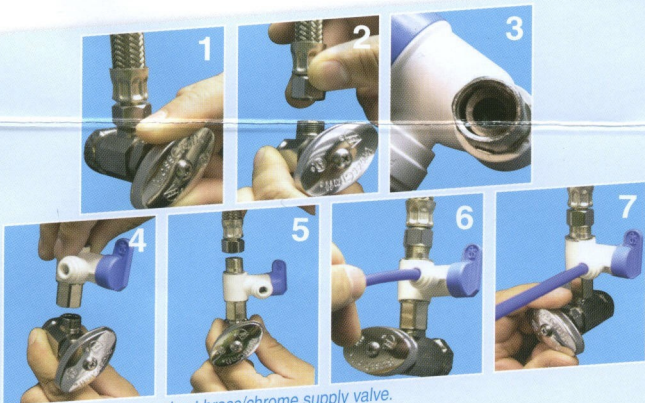
ANGLE STOP VALVE (ASVPP1 & ASVPP2)

Installation User Instructions

Introduction. The John Guest Angle Stop Valve connects between the supply valve and riser, to the main water supply line, for applications in Reverse Osmosis, Filtration Systems, Automatic Coffee Brewers, Ice-makers, and many more.

Please read these instructions carefully before installing this product.

Please refer to the John Guest Speedfit Installation Guide and Technical Check List for all other information or visit our website at www.johnguest.com.



1. Shut off water supply at brass/chrome supply valve.
2. Disconnect riser from brass/chrome supply valve.
3. Ensure that the sealing gasket is fully seated into the Angle Stop Valve female thread.
4. Install Angle Stop Adapter Valve on supply valve.
5. Connect the riser to the Angle Stop Adapter Valve.
6. Fully insert tubing into the Speedfit side of the valve.
7. Open valves and check for leaks.



NSF 51
NSF 61