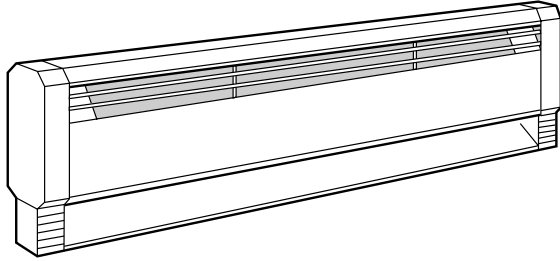




470 Beauty Spot Rd. E, Bennettsville, SC 29512



FILE #E37116

**SUBMITTAL SHEET  
HBB SERIES  
LIQUID FILLED ELECTRIC  
HYDRONIC HEATERS**

CAPACITIES
500 TO 2000 W 145, 188 or 250 Watts/ft. 28", 34", 46", 58", 70" or 94" lengths 1 phase only

JOB NAME: \_\_\_\_\_

LOCATION: \_\_\_\_\_

ARCHITECT: \_\_\_\_\_

ENGINEER: \_\_\_\_\_

CONTRACTOR: \_\_\_\_\_

SUBMITTED BY: \_\_\_\_\_

DATE: \_\_\_\_\_

ITEM	QTY.	CATALOG NUMBER	TAG	WATTS	VOLTS	PHASE Ø	AMPS	BUILT-IN CONTROLS

ACCESSORIES  
AND  
CONTROLS

ITEM	QTY.	CAT. NO.	TAG	DESCRIPTION

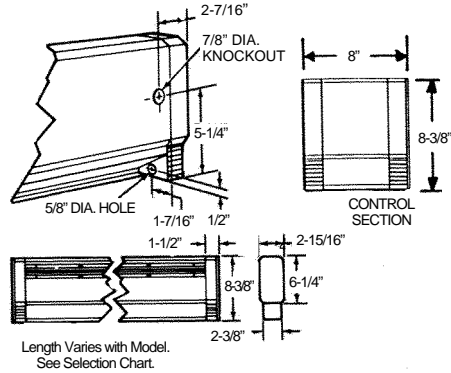
HBB SERIES - LIQUID FILLED ELECTRIC HYDRONIC HEATERS



470 Beauty Spot Rd. E, Bennettsville, SC 29512

**WIRING COMPARTMENTS  
DIMENSIONS**

Unit length varies  
with model.  
See Selection Chart.



**ARCHITECT'S & ENGINEER'S SPECIFICATIONS\***

Furnish and install where indicated on plans, electric baseboard heaters, suitable for continuous operation as manufactured by QMark, A Marley Engineered Products Brand, Bennettsville, SC. Heaters shall be UL listed.

**ENCLOSURE:** The heaters shall be fabricated of minimum .028 inch electro-galvanized steel with minimum .040 inch electro-galvanized steel control boxes. Support brackets shall be 18 ga.

**FRONT COVER:** The front cover shall be fabricated of minimum 18 ga. galvanized steel.

**HEATING ELEMENT:** The heating element wire shall consist of 80% nickel, 20% chromium, and shall be encased in steel sheath to assure long and trouble free life. Aluminum fins

shall be so designed as to block sheath radiation to front and back of heater body and pressure bonded to steel sheath.

**INSTALLATION:** Heaters shall be designed to permit use of supply conductors with 60°C insulation.

**GENERAL:** Linear thermal cut-out shall be factory installed to automatically shut off heater in event of overheating and reactive heater when temperatures return to normal. Raceway cover kit for providing an enclosed raceway is standard. The complete heater shall have a height of 6-3/4 inches and a depth of 2-7/8 inches. Heaters shall have UL approval for mounting on any floor surface including carpeting. The heater shall have a baked enamel finish.

\* QMark reserves the right to change specifications without prior notice.

**SELECTION CHART**

CATALOG NUMBER	VOLTS	WATTS	BTU/HR	AMPS	APPROX. HTG. AREA	LENGTH (IN.)	SHIP WT. (LBS.)
HBB500	120	500	1706	4.2	60 S.F.	28	10
HBB508	208	500	1706	2.4			
HBB504	240/208	500/375	1706/1280	2.1/1.8			
HBB750	120	750	2560	6.3	95 S.F.	34	12
HBB758	208	750	2560	3.6			
HBB754	240/208	750/563	2560/1921	3.1/2.7			
HBB1000	120	1000	3413	8.3	125 S.F.	46	15
HBB1008	208	1000	3413	4.8			
HBB1004	240/208	1000/750	3413/2560	4.2/3.6			
HBB1250	120	1250	4265	10.4	155 S.F.	58	19
HBB1258	208	1250	4265	6.0			
HBB1254	240/208	1250/938	4265/3200	5.2/4.5			
HBB1500	120	1500	5120	12.5	185 S.F.	70	22
HBB1508	208	1500	5120	7.2			
HBB1504	240/208	1500/1125	5120/3839	6.3/5.4			
HBB2008	208	2000	6826	9.6	250 S.F.	94	30
HBB2004	240/208	2000/1500	6826/5120	8.3/7.2			

CATALOG NO.	DESCRIPTION
HBBT1*	22Amp @ 120-240VAC 18Amp @ 277VAC Single Pole Thermostat Snap Action Type. Field Installed in Junction Box.
HBBT2*	22Amp @ 120-240VAC 18Amp @ 277VAC Double Pole Thermostat Snap Action Type. Field Installed in Junction Box.
HBBT1TP*	Same As Model LFT1 Except Tamperproof.
HBBT2TP*	Same As Model LFT2 Except Tamperproof.
HBBAC	Air Conditioner Outlet Section. 20Amp @ 208-240VAC.
HBDR	Duplex Receptacle Section. 15Amp @ 120VAC.
HBBWS	8" Blank Wiring Section.

\* Installs in junction box.

CATALOG NO.	DESCRIPTION
HBBLVRO	Low Voltage Relay Control Section 25A @ 120VAC
HBBLVR8	Low Voltage Relay Control Section 25A @ 208VAC
HBBLVR4	Low Voltage Relay Control Section 25A @ 240VAC
HBBDCS2	Two Pole Disconnect Switch Section.

Control Section 8" in length.

CATALOG NO.	DESCRIPTION	
CBDIC	Inside Corner Section	2
CBDIC	Outside Corner Section	2
CBDBS2	2 Ft. Blank Section	6
CBDBS3	3 Ft. Blank Section	8
CBDBS4	4 Ft. Blank Section	11
CBDBS5	5 Ft. Blank Section	14
CBDBS6	6 Ft. Blank Section	16
CBDBS8	8 Ft. Blank Section	22