



# The Energy Detective



# ABOUT ENERGY, INC.

Energy, Inc. manufactures the product line of **TED – The Energy Detective**, the market leader in electricity monitors. It has been proven that real-time energy feedback is the single-most significant factor in energy conservation.

Incorporated in 2001, Energy Inc. is committed to providing user-friendly, revolutionary products, like the new 3-phase TED designed for commercial applications, as well as the integration of Zigbee-based devices (thermostats and relays) to allow for automated and remote control/viewing of devices and appliances.

## PARTNERSHIPS



Energy, Inc. is a partner of Google, allowing TED devices to work with Google PowerMeter.



3M has invested in Energy, Inc., providing Energy, Inc. access to some of the largest research facilities in the world.



Energy, Inc. has integrated with Control 4 Home Automation systems in order to provide real-time data using the TED 5000 series.

## TED PRODUCT LINES

### 1000 Series



First released in 2004, the TED 1000 series offers a plug-in display that does not require a computer for set up.

The 1000-series is a workhorse, providing a wealth of real-time information; historical data can be logged with the optional Footprints Software.

### 5000 Series



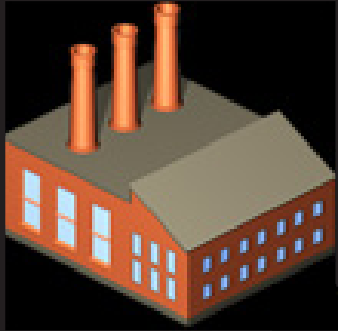
Released in 2009, the sleek 5000 series of TED automatically stores up to 10 years of data and allows users to view the information remotely.

The 5000 series comes with TED Footprints data-logging software embedded and works with solar/wind installations.

### 3000 Series

The 3000 series is designed for small-to-medium 3-phase commercial facilities. The 3000 series has all the capabilities and functionality of the TED 5000 series - and more!

# HOW TED 5000 WORKS WITH SOLAR



**1.** Electricity travels from utility to meter to breaker panel in home.



**3.** One measuring unit is attached to the main incoming conductors of the breaker panel to measure CONSUMPTION.



**5.** The measuring units use powerline carrier signal to communicate with the Gateway plugged into any outlet in the home.



**6.** Data can be viewed on wireless display, computer, or any internet accessible device (when connected to an existing internet service). View up to 10 years worth of production, consumption, and net metering data.

**2.** Solar/Wind system produces electricity which travels from inverter to breaker panel.



**4.** One measuring unit is attached to the breaker connected to the solar inverter to measure PRODUCTION.



# TED INSTALLATION

\*THIS IS A SUMMARY OF THE INSTALLATION EFFORT - AND **NOT** TO BE CONSIDERED INSTALLATION INSTRUCTIONS.

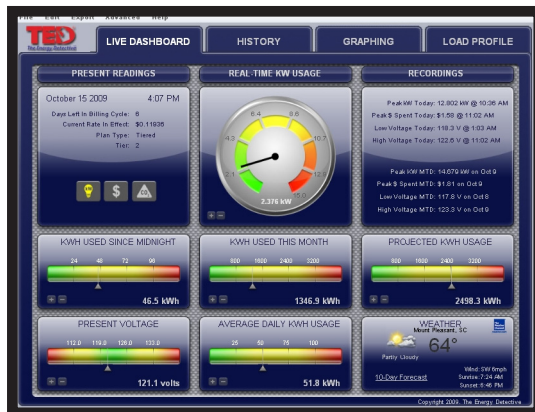
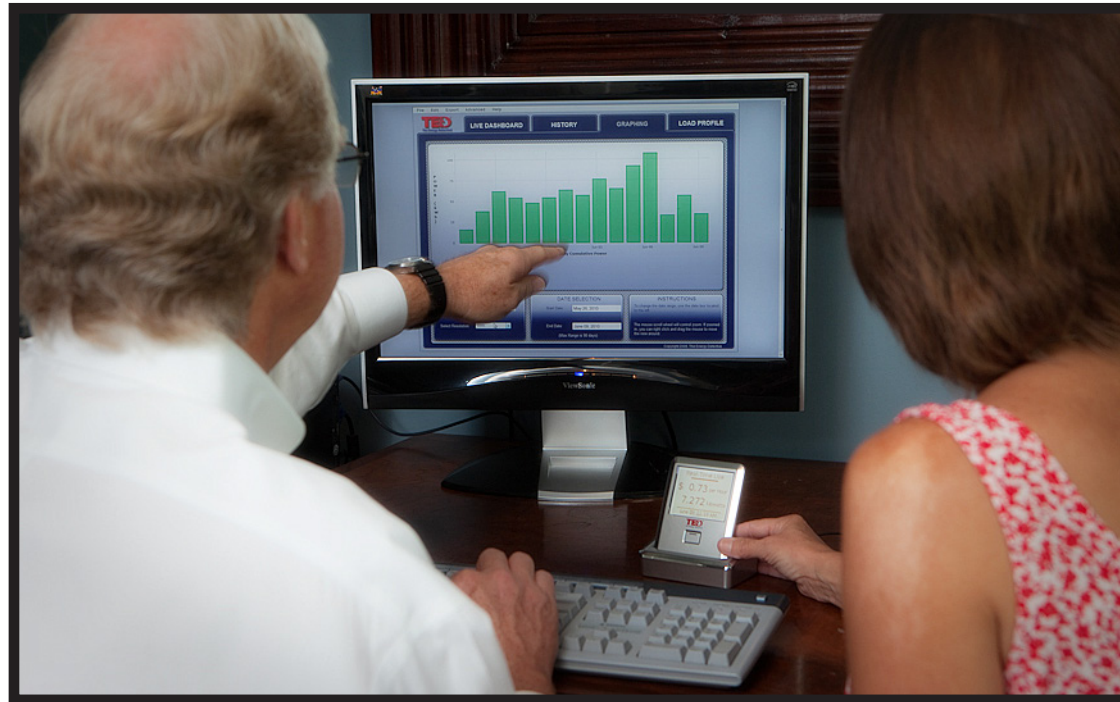
INSTALLATION VIDEO: [www.theenergydetective.com/video](http://www.theenergydetective.com/video).

1. Open the Circuit Breaker panel and turn off all power.
2. Clamp one Current Transformer around each of the main incoming wires.
3. Connect the Current Transformers to the Measuring Transmitting unit.
4. Connect two leads of the Measuring Transmitting Unit to a two-pole breaker.
5. Connect the neutral wire of the Measuring Transmitting Unit to a two-pole breaker.
6. Plug the Gateway into an available outlet in the home near your router or computer.
7. Connect the Gateway to your computer or router via the supplied ethernet cable.
8. Set up the software on your computer and begin using TED!



# FOOTPRINTS SOFTWARE

Footprints data-logging software allows consumers to easily view, chart, and graph their electricity usage.



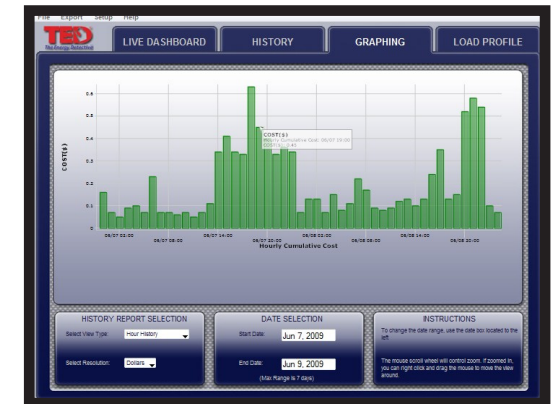
## Interactive Dashboard

Helps project monthly bills and allows customers to view data in both dollar and kilowatt amounts.



## Graphing

Customers can easily watch data update every second to see instant changes caused by electricity usage.

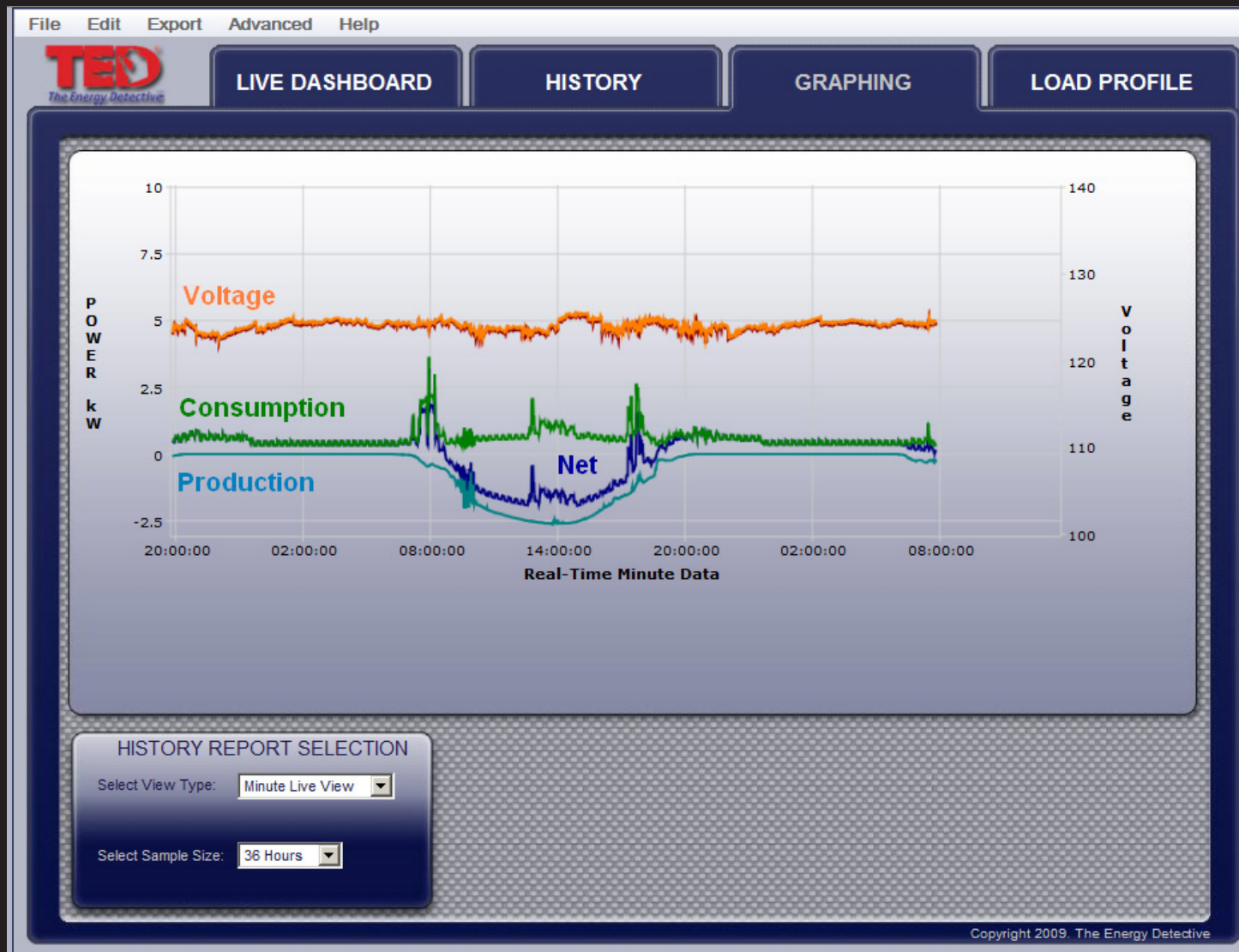


## History

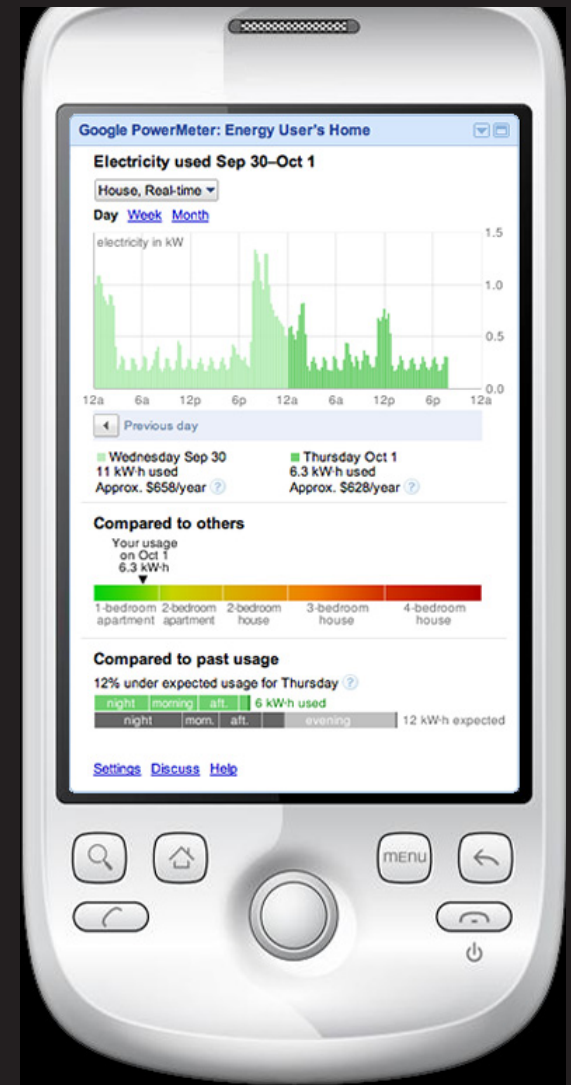
TED stores up to 10 years worth of data and allows users to graph and chart their electricity usage.

# SOLAR FEATURES OF TED 5000

TED 5000's software and third party applications easily measure production, consumption, and net metering.

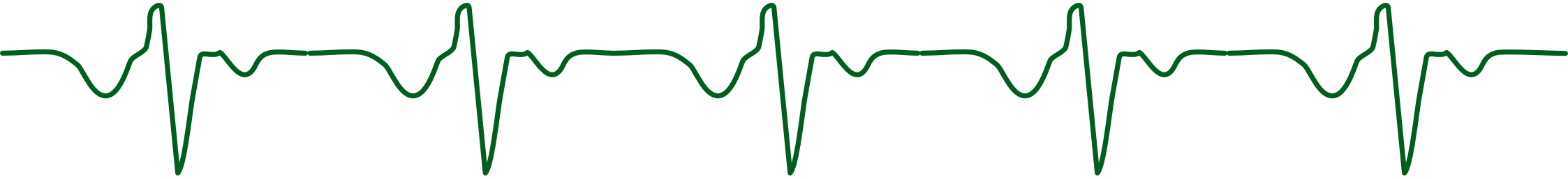


This live "minute-view" of the past 36 hours show when energy was produced during the day, and used throughout the day/evening (note use easily in the morning and cooking dinner in the evening). Easily see voltage, consumption, production, and net metering on one easy-to-read interaction graph.



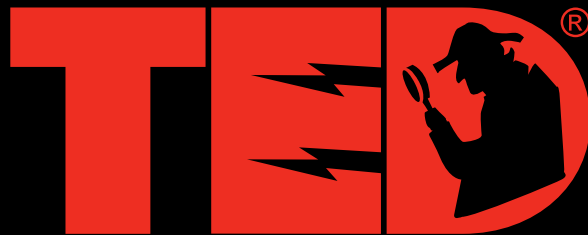
Google PowerMeter allows customers to view their electricity usage remotely and compare to past usage.

# TOP 10 REASONS TO PURCHASE TED



- 1. Market Leader** - TED is the market leader in energy management and is committed to providing user-friendly, cost-effective solutions in energy conservation, control, and management.
- 2. Permanent Installation** - TED's quick and easy 15-minute installation takes place in the breaker panel, not the meter, so it will work with any utility in North America.
- 3. Software Upgradeable** - Features are continually being added to TED - all at no charge, and publically downloadable from the TED website.
- 4. Maintenance-Free** - Once TED is installed, all functions occur automatically. Unlike other electricity monitors, TED has no batteries to change. There are also no monthly or subscription fees.
- 5. View Data Remotely** - TED's Gateway has built-in web server, allowing connection to any Internet source. Using the Gateway's static IP address, energy use may be viewed from anywhere in the world via the Internet.
- 6. Partnerships** - TED has partnered with Goggle PowerMeter and Control 4's Home Automation Systems to allow energy-usage comparisons and load control for appliances.
- 7. Load-Profiling** - Isolate and track up to five individual appliances (such as a water heater, HVAC, washer, dryer, pool pump, etc.) using our Load Profile Wizard in our Footprints software.
- 8. Sensitive to 1-Watt** - TED is sensitive to 1 *watt*! Due to TED's high sensitivity, you can easily find phantom loads throughout your home and save hundreds on your electricity bill.
- 9. Accurate to Within 2%** - TED is calibrated to be accurate within 2%, but you will likely find it closer to 1%. TED does measures VOLTAGE, a critical component for accurate data!
- 10. 10-yr Detail Data Storage** - TED's Gateway stores up to 10 years of data; easily view graphs, charts, and trends in usage!

## BEGIN SAVING NOW!



ENERGY, INC.

3297 Pacific Street, Charleston, South Carolina 29418

Tel: (843) 766-9800 Fax: (843) 769-4287

[www.theenergydetective.com](http://www.theenergydetective.com)