

SUNTEMP 600-A



S600-1

Submittal

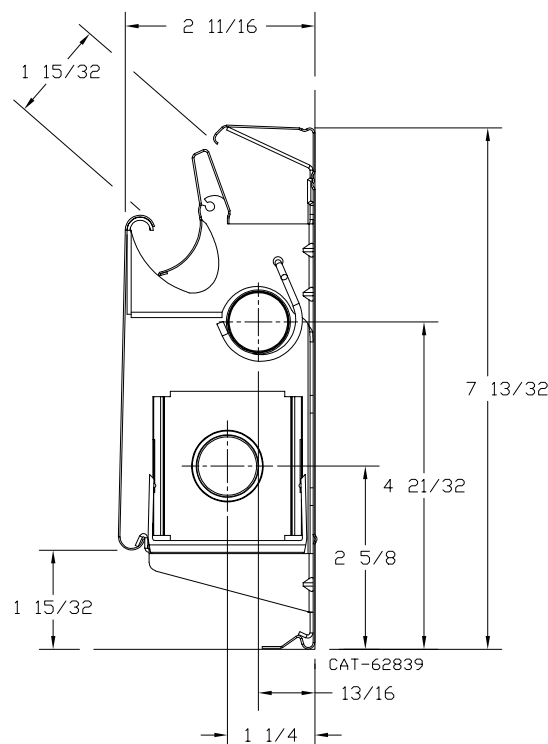
Baseboard Radiation

Specification

ENCLOSURE:

STYLE : "Suntemp 600-A"

COLOR: White

FRONT: 24 Ga. Roll Formed
Prepainted Steel**BACKPLATE:**24 Ga. Roll Formed
Prepainted Steel**DAMPER VANE:**Roll Formed
Prepainted Steel**ELEMENT:**TYPE: Cu/Al Mechanically
Expanded
Flared One End**BRACKETS:**Die Formed 18 Ga.
Prepainted Steel**SLIDE SHOES:**High Temperature
Nylon Snap On**ACCESSORIES:**All overlapping
with Snap On Fit
and Baked Enamel
Finish

RATINGS



Model	GPM	Average Hot Water Temperature °F - BTU/Hr./Lin. Ft.								
		140°	150°	160°	170°	180°	190°	200°	210°	220°
600-A 1/2"	4	330	390	450	520	590	670	740	820	900
	1	310	370	430	490	560	630	700	780	850
600-A 3/4"	4	320	380	440	510	570	630	710	770	840
	1	300	360	420	480	540	600	670	730	790



RATINGS ON ASSEMBLIES AS MARKED*

260 North Elm St., Westfield, MA 01085
(413) 564-5545 Fax: (413) 562-8437

A MESTEK COMPANY

PROJECT: _____ DATE: _____

LOCATION: _____

ARCHITECT: _____

ENGINEER: _____

CONTRACTOR: _____

PO NUMBER: _____

SUNTEMP 600-A

Submittal

Baseboard Radiation

Specification

Furnish and install where shown on all plans/drawings, Suntemp 600-A Finned Tube Enclosure and Element as described or approved equal of both quality and BTU capacity. Ratings are to be I=B=R approved.

The baseboard panel radiator enclosure, as called out 600-A, will be manufactured from 24 gauge pre-painted bonderized C.R.S. All lateral bends are to be roll formed to ensure continuity of all adjoining enclosures and accessories. The enclosure lengths are to be provided in 12 inch increments from 2 feet through 14 feet long. The front panel is to be fully engaged onto mounting brackets engaged with the back panel. Splice plate and damper joiner are to be used where two pieces of enclosure are adjoining each other in a run. These are to be included with all 5', 6' and 8' assembly packages.

All accessories will be die formed cold rolled steel and finished with a baked enamel finish. The accessories will overlap the installed enclosure and are to provide adjustment for make-up in the installed runs of enclosure. End accessories will extend to the floor. The accessories are to be enclosure height and have finger tabs that bend around the assembled baseboard for positive securing.

The brackets are to be of a one piece, die formed construction. The material is to be 18 gauge pre-painted bonderized C.R.S. The bracket is to be self locating for vertical positioning at installation. The bottom horizontal leg is to snap into bottom bend of the enclosure and is to support the element where slide shoes are located.

All elements are to be of the mechanically expanded type to ensure that proper fin to tube bonding is maximized. Copper/Aluminum elements are to be provided with one end mechanically swaged (flared) for proper assembly.

In the interest of product improvement, we reserve the right to make changes without notice.