

NOTES:

1. CONFIGURATION: WIRELESS AUTO-CHANGEOVER HEATING / COOLING THERMOSTAT CONTROL WITH DEADBAND. THE RW205 WORKS IN CONJUNCTION WITH ONE OF THE TW205 / TW206 FAMILY OF WIRELESS THERMOSTATS TO CONTROL OUTPUTS. THE RW205 CAN ALSO BE PAIRED WITH AN SW205 / SW206 WIRELESS SENSOR.
2. TEMPERATURE SENSING: OPTIONAL REMOTE PROBE CONNECTION.
3. OPERATION: THE RW205 HAS OPERATING MODES "AUTO," "OFF," "HEAT," AND "COOL." WITH THE ASSOCIATED TW205 / 206 IN THE "OFF" MODE, ALL THERMOSTATIC FUNCTIONS ARE OFF, BUT THE FAN MAY STILL BE OPERATIONAL. IN THE "COOL" MODE, THE CONTROL FUNCTIONS AS A COOLING-ONLY THERMOSTAT. IN THE "HEAT" MODE, THE CONTROL FUNCTIONS AS A HEATING-ONLY THERMOSTAT. IN THE "AUTO" MODE, THE THERMOSTAT SELECTS THE PROPER FUNCTION DEPENDING ON ZONE TEMPERATURE AND SETPOINT. HEAT AND COOL OUTPUTS HAVE A 1 °F (0.6 °C) DIFFERENTIAL TO PREVENT SHORT CYCLING. THE FAN OPERATES (CYCLED OR CONTINUOUS) AT A SINGLE SPEED THAT IS USER-SELECTABLE BETWEEN "HIGH," "MED," AND "LOW." SEE INSTRUCTION SHEET FOR COMPLETE OPERATION AND CONFIGURATION INFORMATION.
4. MATERIALS: BASE AND COVER ARE MOLDED FROM ABS POLYMER COLOR MATCHED TO PANTONE COOL GREY 2C.
5. MOUNTING: THE RW205 BASE INSTALLS WITH FURNISHED MOUNTING SCREWS TO A PTAC ENCLOSURE WALL OR TO A STANDARD VERTICAL 2" X 4" X 2-1/8" (51 X 102 X 54) DEVICE BOX. THE RW205 MAY ALSO BE INSTALLED THROUGH A PTAC ENCLOSURE WALL USING FURNISHED MOUNTING SCREWS AND ENCLOSURE CUTOUT DIAGRAM.
6. ELECTRICAL CONNECTIONS: THE RW205 HAS A SET OF EIGHT (8) 5-MM PRESSURE TERMINALS USED FOR OUTPUTS AND A/C POWER, AND A SET OF THREE (3) 3-MM PRESSURE TERMINALS USED FOR SENSOR INPUT. WIRES MAY BE SOLID OR STRANDED, AND SHOULD BE STRIPPED TO 0.25" (6.4 MM). SEE THE WIRING TABLE FOR MORE INFORMATION.
7. ELECTRICAL RATINGS:

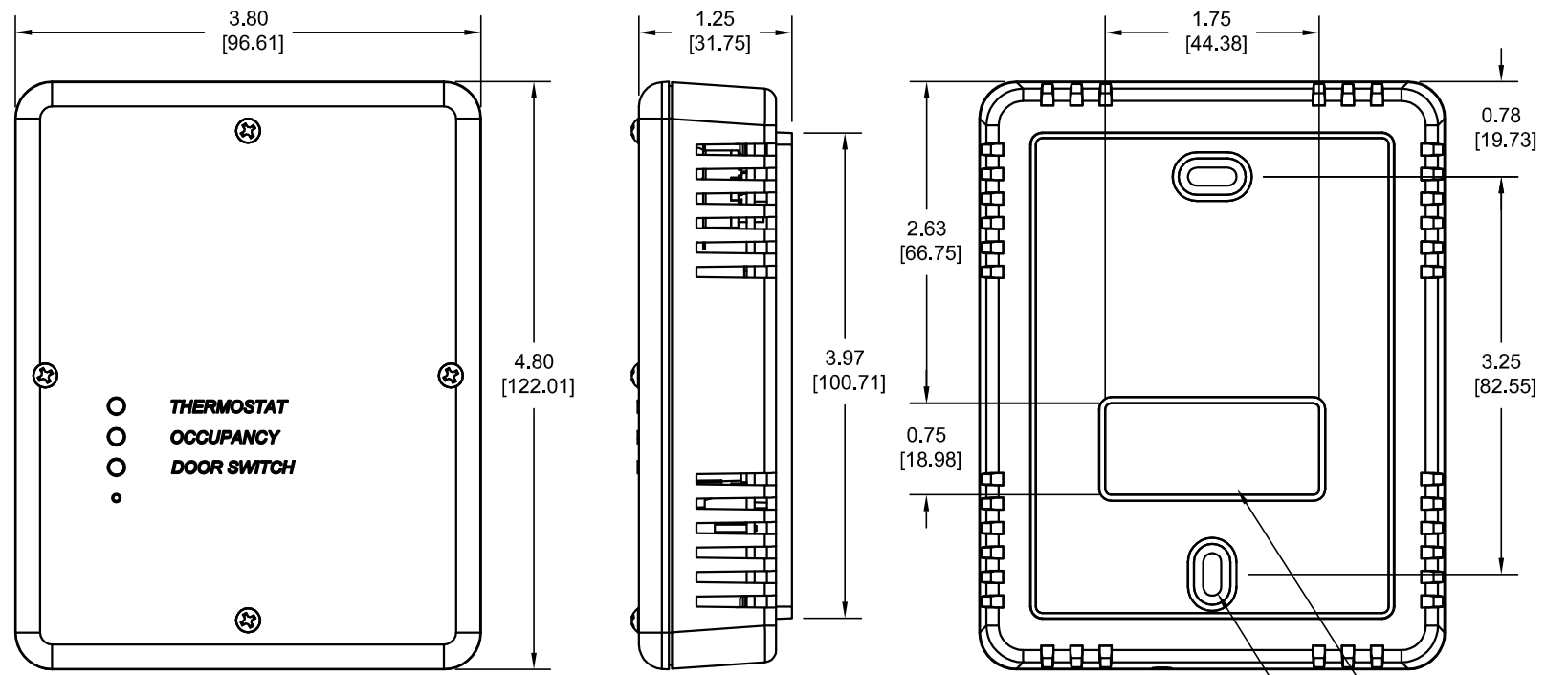
VOLTAGE RATING	SWITCHING				
	INDUCTIVE FLA	INDUCTIVE LRA	RESISTIVE AMPS	PILOT DUTY	HP
24 VAC	N/A	N/A	N/A	24 VA	N/A
120 VAC	5.8	34.8	6.0	125 VA	1/4
240 VAC	2.9	17.4	5.0	125 VA	1/4
277 VAC	2.4	14.4	4.2	125 VA	1/4

TOTAL LOAD NOT TO EXCEED 20 AMPS.
LOW VOLTAGE WIRING CLASS 2.

8. WIRELESS INFORMATION: THE RW205 EMPLOYS A FREQUENCY-HOPPING RADIO THAT OPERATES IN THE 902 - 928 MHz BAND. THE RW205 COMPLIES WITH PART 15 OF THE FCC RULES AND GUIDELINES FOR RF DEVICES.
9. MARKING TO INCLUDE:
RW205-001
DC (DC REPRESENTS A DATE CODE)
10. PACKING: INDIVIDUALLY BOXED WITH MOUNTING HARDWARE, OWNERS' MANUAL, AND INSTRUCTION SHEET. 10 UNITS PER CASE CARTON, 4 CASES PER MASTER CARTON.
11. THIS ASSEMBLY AND ALL COMPONENTS AND SUBASSEMBLIES CONTAINED WITHIN MUST MEET ENVIRONMENTAL IMPACT REQUIREMENTS SPECIFIED IN TI-698.
12. AGENCY APPROVAL TO US AND CANADIAN SAFETY STANDARDS PENDING.

WIRING CONNECTIONS TABLE

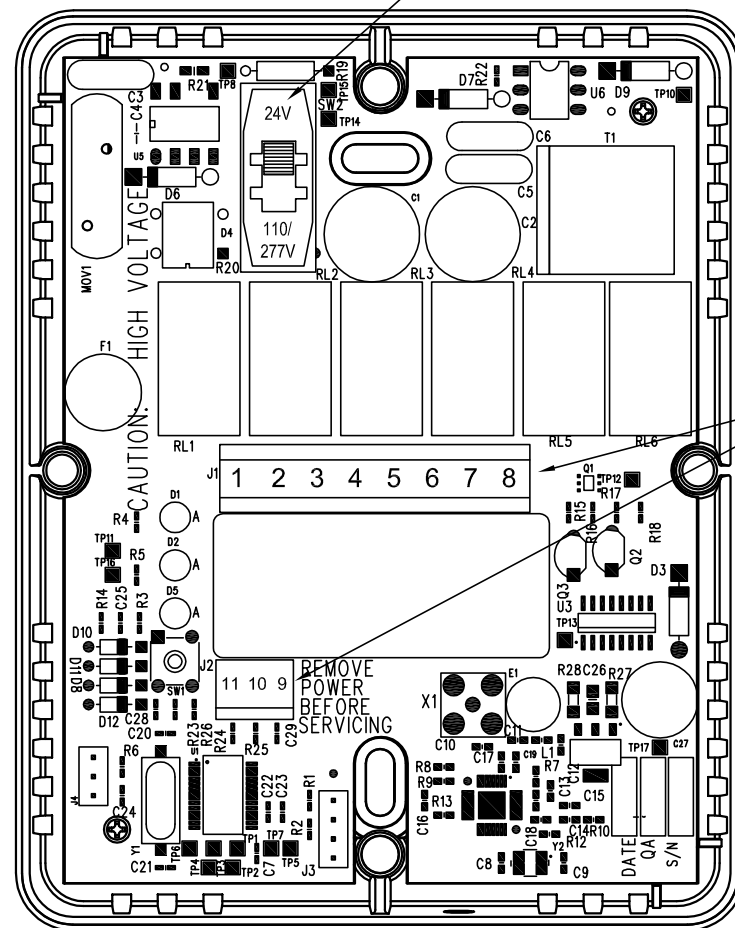
TERMINAL	FUNCTION	WIRE SIZE (AWG)
1	L2	14 - 18
2	L1	14
3	HEAT OUTPUT	14 - 18
4	COOL OUTPUT	14 - 18
5	FAN LOW	14 - 18
6	FAN MED	14 - 18
7	FAN HIGH	14 - 18
8	OUTSIDE AIR	14 - 18
9	SENSOR COMMON	18 - 26
10	SETBACK	18 - 26
11	REMOTE PROBE	18 - 26



FOR 24 VAC OPERATION, SWITCH MUST BE IN 24V POSITION (SHIPPED IN 110-277V POSITION)

PTAC / JUNCTION BOX MOUNTING HOLES (2)

OPENING FOR WIRING



COVER REMOVED
SCALE 1 : 1

DATE	REV	DESCRIPTION	DR.	CK.
04/21/09	1	ECN 8470 ALLOW 4 MOUNTING SCREWS	BK	DB

TOLERANCES EXCEPT AS NOTED	PECO PECO, INC. PORTLAND, OR. USA	
INCH (METRIC) .X= .XX= .XXX=	PART NUMBER 69403	SCALE 2 : 3
ANGULAR ±	TITLE RCV ASSY, RW205-001	
DO NOT SCALE DRAWING: DIMENSIONS ARE CONTROLLING	SIZE B	DRAWING NUMBER RW205-001