

Warning !

To avoid possible electrical shock, which can cause death or serious injury, always disconnect power from the appliance before attempting any repairs or modifications.

For Best Service

- Make sure freezer is set to 10 degrees F or colder.
- Water Pressure must be within 15 psi to 125 psi.
- Do not route any supply line through an area exposed to freezing temperatures.
- Connect water supply line to a drinking water source, if not a municipal water system, install a water filter to remove sediment, odor, and unusual tastes.
- Make sure water supply is not connect to a water softener. The chemicals used will damage the icemaker.

If you are not replacing an existing icemaker, you need a different installation kit. Please see your Dealer for the correct kit.

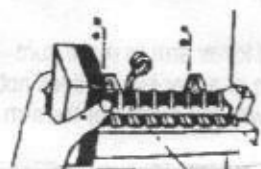


Figure 1

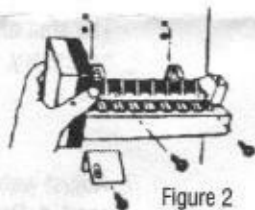


Figure 2

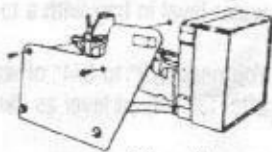
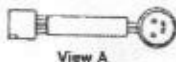
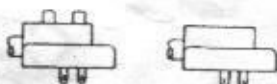


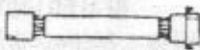
Figure 3



View A



View B



View C

Figure 4

1. Remove defective icemaker from the freezer. Unplug Harness, check existing harness to this kit to make sure you have the correct wiring harness. The icemaker may have two upper screws and one lower mounting screw (see Figure 1) or two mounting clips with one lower mounting screw (see Figure 2). If you do not have the correct harness, you will need a different icemaker kit. Please contact your dealer for the correct icemaker.
2. If existing icemaker has a mounting plate, save the old plate and hardware to reuse. (see Figure 3) Mounting plates vary by model and OEM.
3. Plug in existing cable to icemaker head or use the cable provided with the kit. Existing harness may be round or flat (see Figure 4A & 4C). Round harness may or may not have spacers (see Figure 4B).



Figure 5

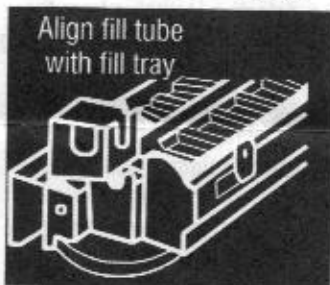
4. Install replacement icemaker, using old mounting hardware and mounting plate if required (see Figure 5). If old icemaker was mounted on square mounting holes you will need to use the two stainless clips provided. (see Figure 6)



Figure 6

5. Check position of water inlet fill tube, align with fill tray. Make sure icemaker is level before tightening screws completely.

6. Make sure that the shut off arm is in the down position (down to make ice, up and locked to shut off icemaker).



Raise and lower arm to make sure the ice bin or auger bucket does not interfere with the motion of the arm.

The shut off arm may be reshaped if necessary, as illustrated in Figures 8 & 9.

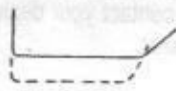


Figure 8



Figure 9

7. Adjust water level in icetray as needed. Remove front cover. Check water level in tray with a toothpick.

You need 1/2" to 3/4" of water in tray after fill. Adjust level as illustrated.

Clockwise decreases fill
Counter-Clockwise increases
1/2 turn is about 20 ccs's

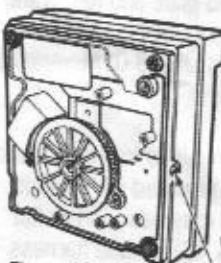


Figure 10

Water Level Adjustment Screw

Supco

SEALED UNIT PARTS, INC

PO Box 21 • 2230 Landmark Place, Allenwood, NJ 08720 USA
732-223-6644 • Fax 732-223-1617 • www.supco.com • info@supco.com