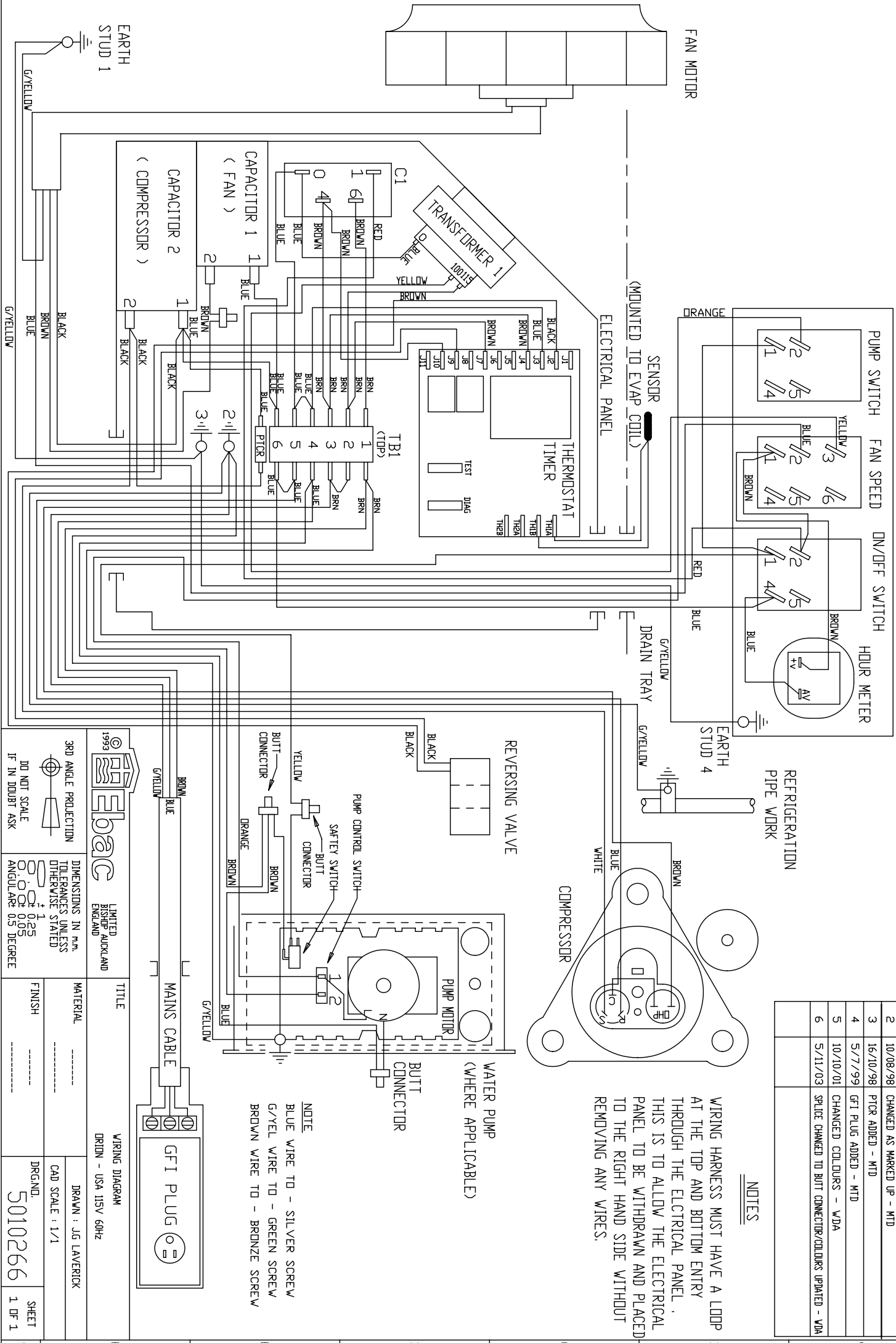


VIEWED FROM THE WIRING SIDE CONTROL PANEL



ISSUE	DATE	AMENDMENTS
1	12/05/98	ORIGINAL
2	10/08/98	CHANGED AS MARKED UP - MTD
3	16/10/98	PTCR ADDED - MTD
4	5/7/99	GFI PLUG ADDED - MTD
5	10/10/01	CHANGED COLOURS - WDA
6	5/11/03	SPICE CHANGED TO BUTT CONNECTOR/COLOURS UPDATED - WDA

NOTES

WIRING HARNESS MUST HAVE A LOOP AT THE TOP AND BOTTOM ENTRY THROUGH THE ELECTRICAL PANEL. THIS IS TO ALLOW THE ELECTRICAL PANEL TO BE WITHDRAWN AND PLACED TO THE RIGHT HAND SIDE WITHOUT REMOVING ANY WIRES.

NOTE
 BLUE WIRE TO - SILVER SCREW
 G/YEL WIRE TO - GREEN SCREW
 BROWN WIRE TO - BRONZE SCREW

1993 Ebac LIMITED BRIDGE AUCKLAND ENGLAND

3RD ANGLE PROJECTION
 DO NOT SCALE
 IF IN DOUBT ASK

DIMENSIONS IN mm
 TOLERANCES UNLESS OTHERWISE STATED
 0.08 ± 0.25
 ANGULAR: 0.5 DEGREE

FINISH -----

TITLE WIRING DIAGRAM
 ORION - USA 115V 60Hz

MATERIAL -----

DRAWN: JG LAVERICK
CAD SCALE: 1/1

DRAWING NO: 5010266

SHEET 1 OF 1