

BASIC SERIES THERMOSTAT

NT20e

Single Stage Heat/Cool with Fan Control
and: • Two Remote Indoor or Outdoor Thermal Sensors



Product Highlights

- Wired Ethernet
- Web Browser Configuration
- Secure Remote Management
- E-mail Status and Fault Reporting
- Internet Standards Compliant

A 21st Century Communicating Thermostat

Proliphix has taken the programmable and communicating thermostat into the 21st century by integrating it with the Internet. Proliphix Internet Thermostats can be connected via Ethernet to a home or small business network and each is able to serve up its own web pages allowing the user to control and monitor their thermostats using a standard web browser on any desktop or laptop computer. Since Proliphix uses Ethernet, there is no need for a separate proprietary wiring scheme and when used in conjunction with a broadband Internet connection its full potential will be realized.

Unmatched Convenience Features

Proliphix offers indoor temperature sensors, which can be mounted away from the thermostat so that temperature inside a home or small business can be averaged across multiple rooms to avoid hot or cold spots and wasted energy. With an optional Proliphix outdoor temperature sensor connected to a networked thermostat, the heating/cooling system can be controlled more precisely to efficiently and more comfortably overcome the indoor to outdoor temperature difference. The web browser configuration tool is simple to use and allows users to easily configure heating or cooling programs to maximize comfort and minimize energy use.

Secure Monitoring and Control Over the Internet

Users can monitor and adjust the temperature settings of each thermostat in their home or office over an authenticated, secure Internet connection. Thermostats can be configured to send alerts to users in the event of failure or high/low temperature alarms. NT20 Internet Thermostats can be configured to send high or low temperature alerts¹ by e-mail or text messaging. This feature allows users to avoid the cost of over-heating, and the potential damage of frozen pipes.

Features

Supports Two Thermal Sensors

Compatible with most HVAC Systems

- Gas/Oil Fired Furnace or Boiler
- Hydronic Heating
- Central Air Conditioning
- Heat Pump

Single Stage Heat and A/C Support

Modes: Heat, Cool, Auto Changeover, Off

Fan Control

- Manual, Auto, and on Heat

Fahrenheit/Celsius Support

Reliable TCP/IP Communications

Web Browser Control Interface

- Secure Password Protection

Flexible Temperature Scheduling

- 366 Day Programming
- 4 Temperature Periods per Day
- Vacation and Special Day Schedules

Remote HVAC Management

Automated E-mail Reporting¹

- High Temperature Alarm
- Low Temperature Alarm
- Filter Change Reminder

Proliphix Network Powered

Failsafe Low Temperature Switch

Clear, Backlit Graphic LCD

ENERGY STAR Compliant

Benefits

Easy Network Installation

Simple Temperature Scheduling

Remote Management & Configuration

Remote Feature Upgrades

Note 1: With FREE subscription to Proliphix Remote Management Service.

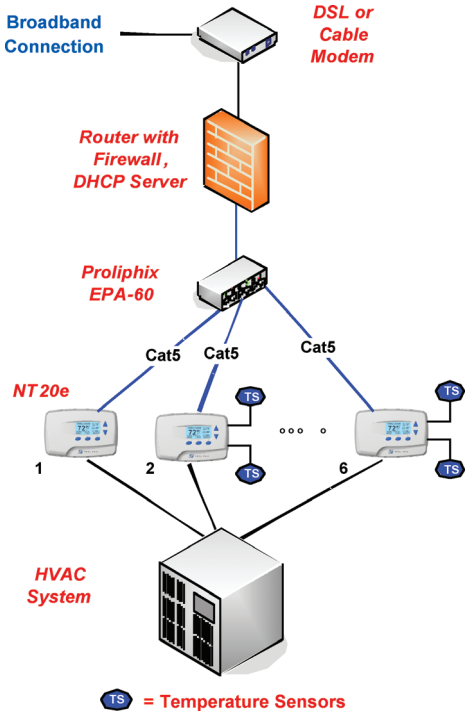


BASIC SERIES THERMOSTAT

NT20e Single Stage Heat/Cool with Fan Control and: • Two Remote Indoor or Outdoor Thermal Sensors

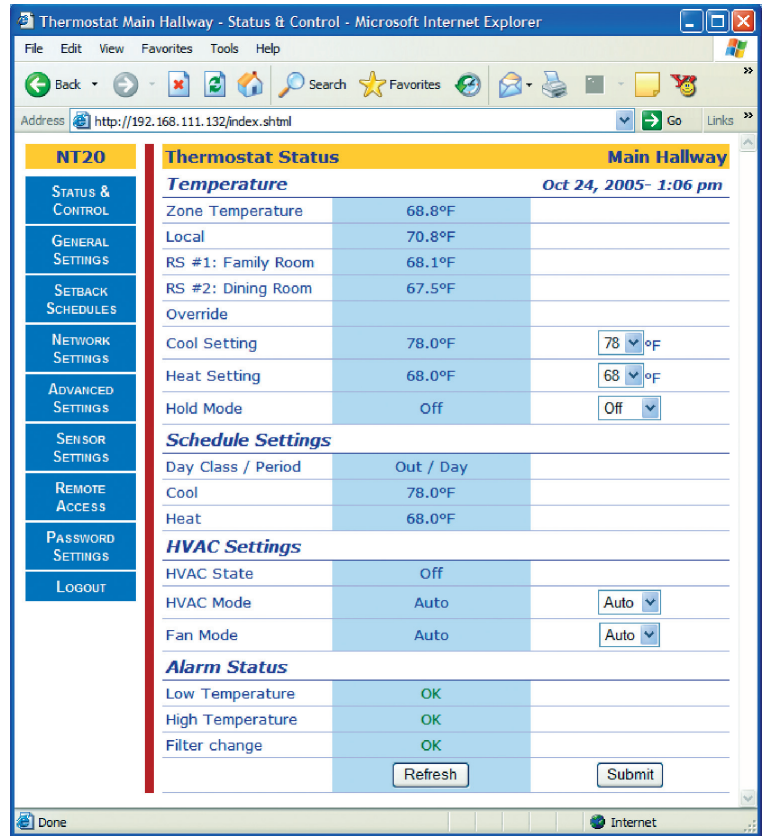
Typical Network Installation

The Proliphix NT20e Network Thermostat is easily installed in a wired LAN environment by terminating conventional Cat5, Cat5e or Cat6 cable to the thermostat terminal block.



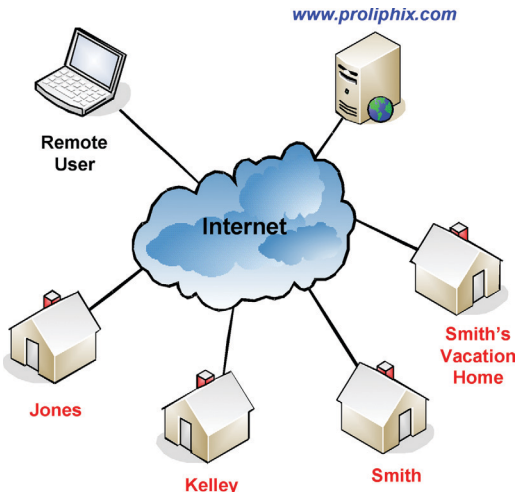
Thermostat Management Interface (TMI)

The default status page is organized clearly to display the most important current settings and status of the NT20e thermostat.



Remote Management

Users can easily and securely communicate with any NT20e Internet Thermostat in a home or small business by first authenticating at the Proliphix website.



Specifications

- Operating Temperature: -10°C to +40°C
- Dimensions: 5.5" x 3.5" x 1.5"
- Shipping Dimensions: 7.5" x 5.5" x 2.25"
- Weight: .75 lb
- Agency Approvals: FCC, UL, ENERGY STAR
- Warranty: 90 day Limited Warranty



Product features and availability are subject to change without notice. Please contact Proliphix or visit our website for more information.