

Converting to Powered Open, Normally Closed

All RDS dampers are shipped as Normally Open, Power Closed dampers. The RDS can be field converted in less than a minute by the following steps:

- 1) Before applying any power to the damper leave the damper in the normally open position.
- 2) Loosen the hex set screw (1/8") and remove motor from the blade shaft.
- 3) Pinch inside of positioning hole grommet and push grommet from hole to remove.
- 4) Push out plastic hole plug on opposite side of damper.
- 5) Switch holes for the grommet and plug.
- 6) Move damper blade to the CLOSED, tight against the blade seal.
- 7) Place motor on opposite side of damper blade shaft and placing the anti-rotation shaft into the hole grommet.
- 8) Tighten the hex screw (Make sure the blade is still in the CLOSED position).
- 9) Wire the damper accordingly.

To convert back just reverse this procedure.

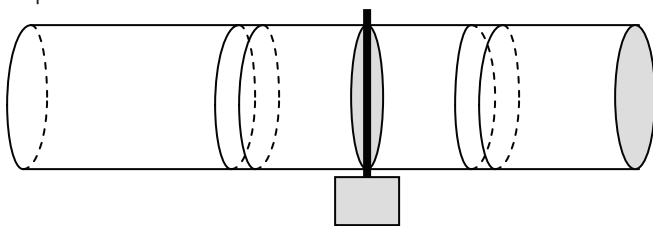
Installation

The RDS is used in-line with the duct and can be installed on a take-off or in-line at any point in the duct. It is recommended the damper be installed as close to the air handler as practical.

Place the flat collar end of the damper over the crimped end of the take-off or rigid metal duct. Insert crimped end of round damper into un-crimped end of rigid round duct and secure with sheet metal screws. When using flexible duct, slip duct over end of the round damper and secure with duct straps (not provided).

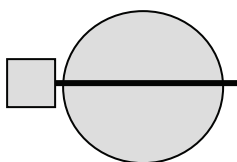
The drawing below shows a top view of the damper in line of the duct. When mounting is recommended that the motor and blade shaft be horizontal to the ground.

Top View



Round damper in-line with round duct.

SideView



WIRING DIAGRAM

