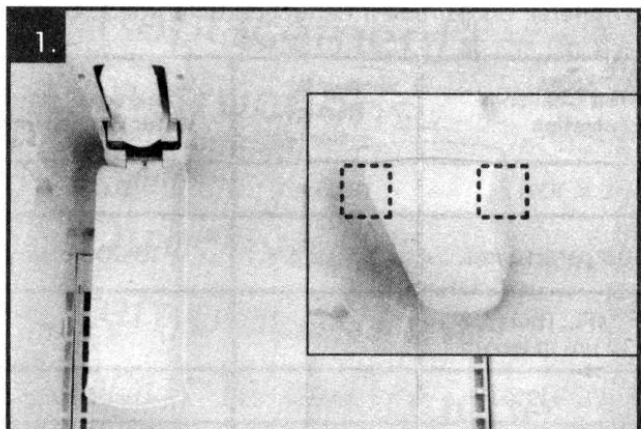


Filter Cartridge Replacement Instructions

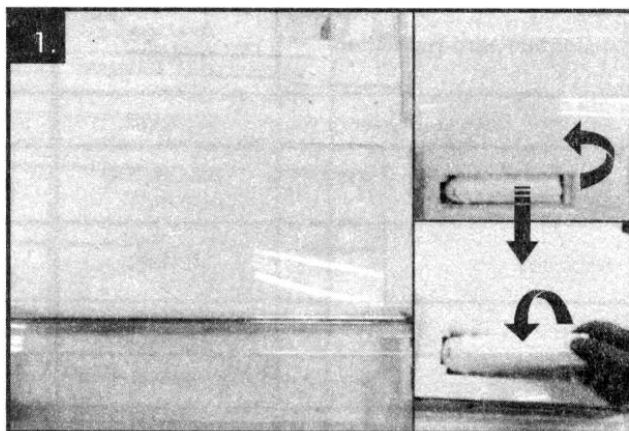
Directives de remplacement pour la cartouche du filtre

Replace the water filter when the refrigerator control pad Filter Reset indicator light turns on, every six months, or when your water dispenser or icemaker performance decreases noticeably. After changing the water filter cartridge, press and hold the Filter Reset button for 3 seconds; indicator light will go out.

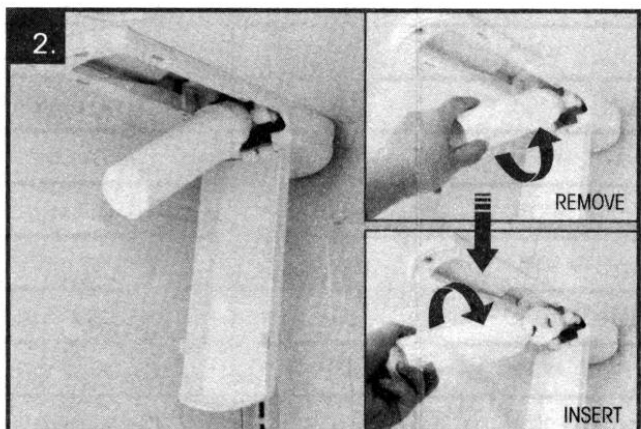
Remplacez le filtre à eau lorsque le voyant indicateur de réinitialisation du filtre sur le panneau de commande du réfrigérateur s'allume ou lorsque le rendement du distributeur d'eau ou de la machine à glace diminue considérablement. Après avoir changé la cartouche du filtre à eau, appuyez pendant 3 secondes sur la touche de réinitialisation et le voyant indicateur s'éteindra par la suite.



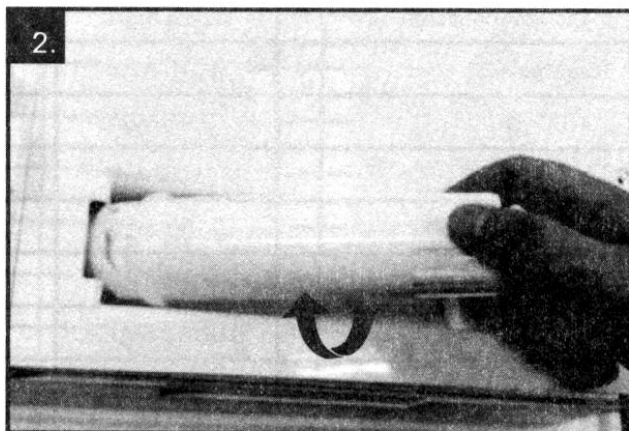
1. Push the ends of cover to open it



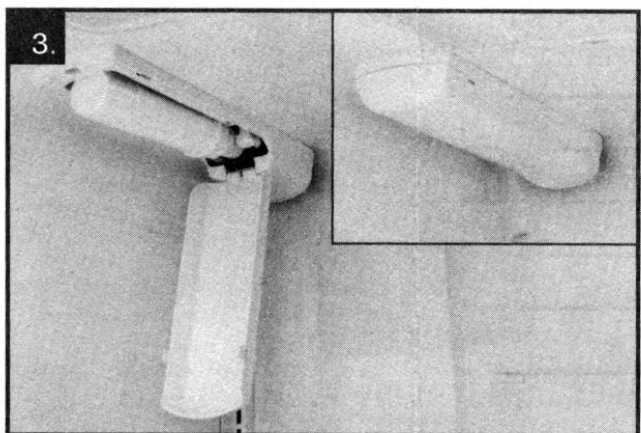
1. Open the door basket. put up the old cartridge and rotate it counter clockwise. And then pull it out.



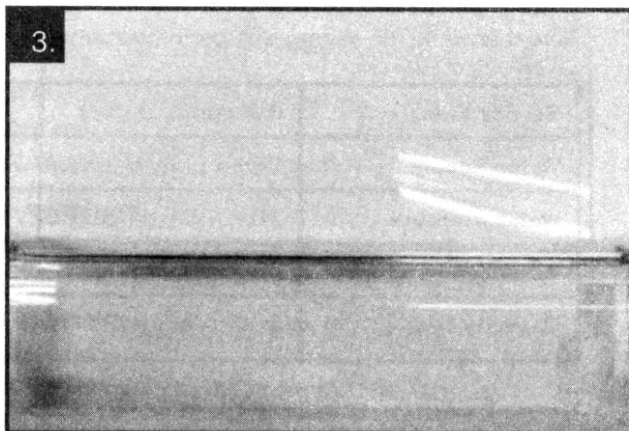
2. Move the cartridge downward and then turn the cartridge counterclockwise. Cartridge will be easily removed. Insert the replacement cartridge and turn it clockwise until you hear "click" sound.



2. Insert the new cartridge into the filter head and rotate it clockwise. put down the New cartridge.



3. Raise the cartridge up and close the cover.



3. Close the door basket