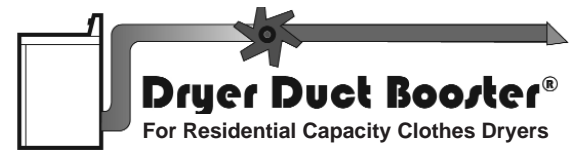




# TJERNLUND PRODUCTS, INC.

1601 Ninth Street • White Bear Lake, MN 55110-6794  
PHONE (800) 255-4208 • (651) 426-2993 • FAX (651) 426-9547  
Visit our web site • www.tjernlund.com



**READ OWNERS INSTRUCTIONS CAREFULLY PRIOR TO INSTALLATION. THESE INSTRUCTIONS MUST REMAIN WITH EQUIPMENT. DO NOT DESTROY.**

## DRYER DUCT BOOSTER® FAN MODEL LB1



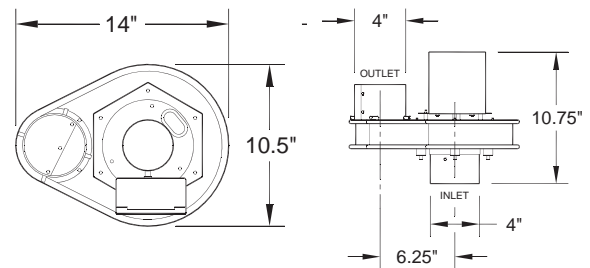
### DESCRIPTION & PURPOSE

The Dryer Duct Booster®, Model LB1, has been specifically designed to boost residential capacity clothes dryer duct exhaust velocities where dryer duct runs exceed 25 equivalent feet. Proper exhaust velocities will reduce drying times, save energy and prevent lint buildup in the dryer duct. The LB1 is controlled by an electronic Pressure Response Control (PRC) for automatic operation. The LB1 utilizes galvanized steel construction, a reverse inclined, particulate handling impeller that is guaranteed not to clog with lint and an externally mounted PSC motor for trouble-free operation.

### SPECIFICATIONS, COMPONENTS & DIMENSIONS

#### MODEL LB1

- Blower: 160 cfm
- Motor: 115 Volts ~ 60 Hz  
0.80 amps maximum
- Impeller: Reverse inclined, particulate handling
- Components: (1) LB1 wired fan assembly  
(1) 16 gauge galvanized steel mounting bracket  
(1) mounting hardware packet



### SEQUENCE OF OPERATION

The LB1 is controlled by an electronic Pressure Response Control (PRC). The control continuously monitors the pressure in the dryer duct. When the dryer is activated, dryer exhaust pressurizes the inside of the dryer duct, activating the LB1. When the LB1 and dryer are operating together, they establish a resulting pressure that is monitored by the PRC. When the dryer shuts off, this pressure decreases and the PRC shuts off the LB1.

**IMPORTANT:** The first time the LB1 has been supplied power and the dryer operates, the LB1 will operate for about 30 seconds, shut off for about 30 seconds and then reactivate. This is normal and allows the LB1 to create a pressure baseline. The LB1 will then operate as stated above for future drying cycles. This automatic initialization sequence occurs again only if power is removed.

### INSTALLATION RESTRICTIONS

#### WARNING

**The LB1 must be installed in compliance with your local building codes. Verify compliance before installing this unit.**

The LB1 must be installed in an area in which ambient air temperatures are between -20° F and 140° F (-29° C and 60° C) and ambient humidity does not exceed 85% relative humidity.

Do not install the LB1 in a position where dryer exhaust temperatures exceed 175° F (80° C) at LB1 inlet.

The dryer duct in which the LB1 is installed must terminate with a dryer vent hood with a damper.

Do not install the the LB1 with the discharge facing down, (See Diagram A).

Not recommended for dryer duct runs exceeding 100 equivalent feet.

#### DIAGRAM A



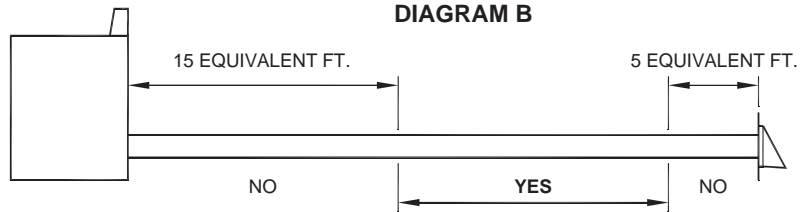
## INSTALLATION RECOMMENDATIONS

Avoid installing the LB1 within 15 equivalent feet\* of the dryer or within 5 equivalent feet of the dryer vent hood, (See Diagram B).

\*Equivalent feet equals linear feet plus 5 additional feet for each 90° elbow and 2.5 feet for each 45° elbow.

Avoid installing the inlet or outlet of the LB1 within 1 foot of dryer duct elbows.

Install the LB1 as close to the middle of the dryer duct run as possible.

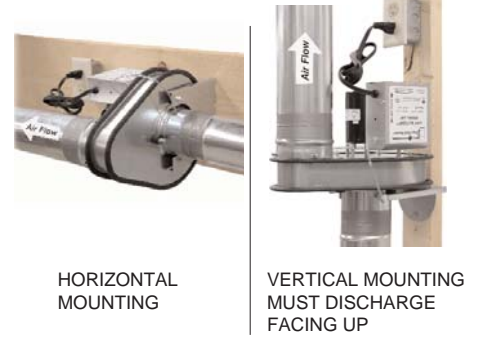


## MOUNTING

**NOTE:** Do not use screws in the dryer duct installation. The LB1 motor can be mounted in a horizontal or vertical orientation. Discharge must face up if mounted vertically, (See Diagram C).

1. Considering dryer duct routing and LB1 location, use the (4) #10 x 1 3/4" wood screws to secure the mounting bracket to the wood structure using the (4) 3/8" holes in the 1/2 moon portion of the bracket. Do not to over tighten the screws.
2. Based on the desired mounting orientation, position the mounting bracket onto 3 of the 4 vibration isolators located on the LB1. Tighten the bracket in place using the (3) provided 1/4" nuts.
3. Insert dryer duct on inlet and outlet of LB1 and secure using reinforced foil duct tape. Plug-in the LB1 when dryer duct and vent hood are installed and secured.

**DIAGRAM C**



## MAINTENANCE & SERVICE

The LB1 motor and fan assembly are maintenance free. The fan impeller is designed for particulate handling. The pressure sensing tube is self-cleaning. If the unit experiences operation difficulties, contact Tjernlund at 1-800-255-4208.

If you have any questions about your LB1 we suggest that you contact your installer, contractor or service agency. If you require technical information contact Tjernlund Products, Inc. at 1-800-255-4208 or visit [www.tjernlund.com](http://www.tjernlund.com).

When contacting Tjernlund Products, Inc., please have the following information available:

1. Name and address of installer and service agency.
2. Job code on nameplate, date of original installation and dates any service work was performed.

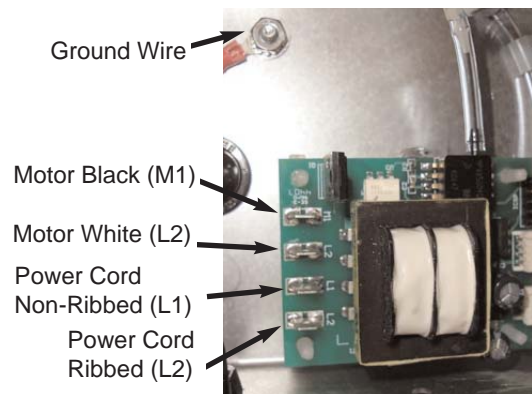
## REPLACEMENT PARTS AND WARRANTY

Part Number	Part Number
Sensing Tube Assembly Kit	950-9100
Pressure Response Control Kit	950-9102
Motor Kit	950-9101

### WHAT IS NOT COVERED

- Product installed contrary to our installation instructions.
- Any freight charges related to the return of the defective part.
- Product that has been altered, neglected or misused.
- Any labor charges related to evaluating and replacing the defective part.

## PRESSURE RESPONSE CONTROL (FACTORY WIRING)



### TJERNLUND LIMITED FIVE YEAR MATERIAL AND NO-CLOG WARRANTY

Tjernlund Products, Inc. warrants to the original purchaser of this product that the product will be free from defects due to faulty material or workmanship for a period of (5) years from the date of original purchase or delivery to the original purchaser, whichever is earlier. Remedies under this warranty are limited to repairing or replacing, at our option, any product which shall, within the above stated warranty period, be returned to Tjernlund Products, Inc. at the address listed below, postage prepaid. Additionally, Tjernlund warrants to the original purchaser of this product that the unit will not become inoperable due to lint blockages that restrict the impeller's motion for a period of (5) years from the date of original purchase or delivery to the original purchaser, whichever is earlier. THERE ARE NO WARRANTIES WHICH EXTEND BEYOND THE DESCRIPTION ON THE FACE HEREOF, AND TJERNLUND PRODUCTS, INC. EXPRESSLY DISCLAIMS LIABILITY FOR INCIDENTAL OR CONSEQUENTIAL DAMAGES ARISING FROM THE USE OF THIS PRODUCT. THESE WARRANTIES ARE IN LIEU OF ALL OTHER EXPRESS WARRANTIES AND NO AGENT IS AUTHORIZED TO ASSUME FOR US ANY LIABILITY ADDITIONAL TO THOSE SET FORTH IN THESE LIMITED WARRANTIES. IMPLIED WARRANTIES ARE LIMITED TO THE STATED DURATION OF THIS LIMITED WARRANTY. Some states do not allow limitation on how long an implied warranty lasts, so that limitation may not apply to you. In addition, some states do not allow the exclusion or limitation of incidental or consequential damages, so that above limitation or exclusion may not apply to you. This warranty gives you specific legal rights and you may also have other rights which may vary from State to State. Send all inquiries regarding warranty work to Tjernlund Products, Inc. 1601 9th Street, White Bear Lake, MN 55110-6794. Phone (651) 426-2993 • (800) 255-4208 • Fax (651) 426-9547 • Email [fanmail@tjfans.com](mailto:fanmail@tjfans.com).