

Aqua-Pure
P L U S

SAMSUNG

**SAMSUNG®
Refrigerator Filter
Filtre pour réfrigérateur**

For SAMSUNG Replacement Cartridge No. /
Pour la cartouche de rechange SAMSUNG n°
DA29-00012A
used in / utilisé dans :
SAMSUNG Refrigerator Filter Model /
SAMSUNG filtre pour réfrigérateur modèle
DA97-03175A

Reduces:

- Chlorine Taste and Odor
- Particulate
- Mercury
- Lead
- Cyst
- Carbofuran
- p-Dichlorobenzene
- Asbestos
- Benzene
- Turbidity
- Toxaphene
- Lindane
- 2, 4-D
- Atrazine

Réduit la présence de :

- Goût et odeur de chlore
- Particules
- Mercure
- Plomb
- Sporocyste
- Carbofurane
- p-dichlorobenzène
- Amiante
- Benzène
- Turbidité
- Toxaphène
- Lindane
- 2,4-D
- Atrazine

**GEN-3 Cartridge Replacement
Instruction Sheet**

CAUTION: The filter cartridge should be replaced when the filter indicator light turns red, every 6 months, or if you notice a decrease in water flow from your refrigerator water dispenser. You may need to change filter cartridges more often as use and local water conditions dictate.

1. Please find your refrigerator filter housing in the upper right corner of your refrigerator compartment.
2. Open front cover of the refrigerator filter housing to locate your refrigerator filter.
3. Remove the old cartridge, by pushing in on the cartridge (see Illustration 1).
4. The cartridge will eject slightly with a clicking sound.
5. Pull out the cartridge (see Illustration 2).
6. Insert the new cartridge, by pushing it into the housing until it clicks. To check if cartridge is installed correctly, slightly pull on the cartridge. If the cartridge does not pull out of the housing then it is installed correctly (see Illustration 1).
7. Close front cover of the refrigerator filter housing.
8. Flush the refrigerator water system after replacing the water filter cartridge. Air release may occur during the flush time. Run the refrigerator water dispenser for 5 minutes to flush the refrigerator water system. Discard the flushed water.
9. After replacing the Samsung cartridge, reset the water filter status display and indicator light by pressing and holding the reset button for 3 seconds.

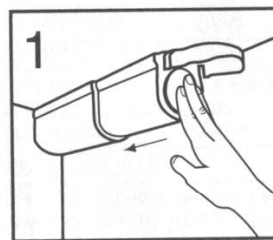


Illustration 1
Push in on the filter
cartridge to uninstall
and install

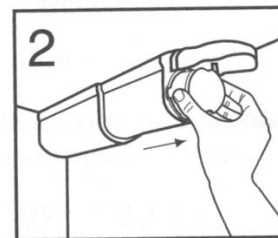


Illustration 2
Pull out filter cartridge
to replace