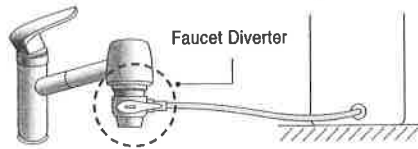


# CP-MN031

## installation guide

### 1 How To Connect Faucet Diverter

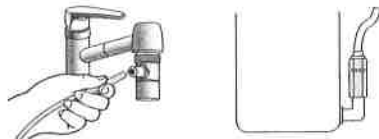
※ Always check if water leaks from the sink or the product. Always use cold water when supplying tap water to the water purifier.



- Remove the cover of the faucet of the sink.
- Connect the faucet diverter to the faucet of the sink as in the figure.



- Connect a tube to the faucet diverter.
- Connect the opposite side of the tube to the tap water supply unit of the product.



⑤ Connect the power cord of the product.

⑥ In 3 minutes, check if purified water flows out from the product by pressing the Outflow button.

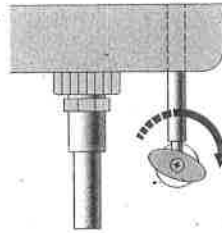
⑦ Use the product after using the Non-Stop Flow menu 10 times. (It takes around 10 minutes.)

• How to Use the Non-Stop Flow menu:  
Tap the Non-Stop Flow button on the top end, and tap the Outflow button.



※ If the faucet diverter does not fit the faucet, connect them by using a connector in the middle.  
※ The faucet diverter is separately sold. (Purchase it if you need it.)  
"Optional"

### 1 Cut off cold water by closing the cold water supply valve under the sink.

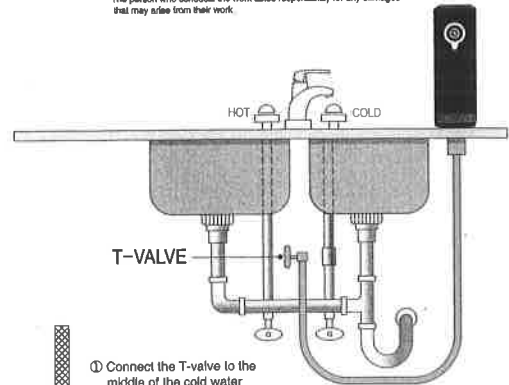


※ Check if cold water flows out by opening the faucet of the sink. (The water must not flow out.)

### 2 How To Connect T-Valve

※ Always check if water leaks from the sink or the product.

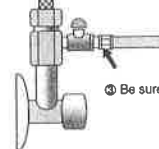
※ When there is no separate hole, you may make a hole for the tube on the top plate of the sink or the table. The person who conducts the work takes responsibility for any damages that may arise from their work.



- Connect the T-valve to the middle of the cold water supply pipe.



- Connect a tube to the T-valve connected to the cold water supply pipe.



- Be sure to lock END CAP.

- Connect the opposite side of the tube to the tap water supply unit of the product.

⑤ Supply cold water by opening the cold water supply valve under the sink.  
• Supply tap water by turning the lever of the T-valve towards the tube.

⑥ Connect the power cord of the product.

⑦ In 3 minutes, check if purified water flows out from the product by pressing the Outflow button.

⑧ Use the product after using the Non-Stop Flow menu 10 times. (It takes around 10 minutes.)

• How to use the Non-Stop Flow menu: Tap the Non-Stop Flow button on the top end, and then tap the Outflow button.



※ Check out the installation demonstration video at the CUCKOO global website ([www.cuckooworld.com](http://www.cuckooworld.com)) or YouTube.