



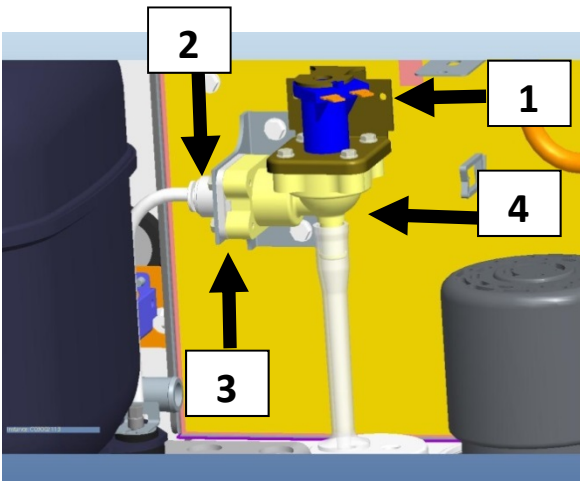
## Water Inlet Valve Installation Instructions

**S-Models 30" and 22"/IBs/S1470/1870/2070/2170/QDuals  
Kits 000009120, 000009122, 000009123, 000009126**

**Warning:** Disconnect electric power to the ice machine (and dispenser if applicable) at the electric switch box before proceeding.

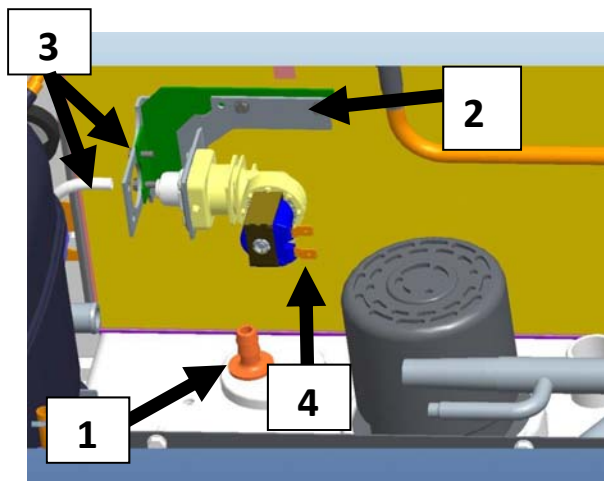
### **S-Models: 30" and 22" Except IB's**

Remove Original Valve



1. Unplug electrical plug from coil.
2. Remove water inlet tube from John Guest fitting.
3. Remove four screws that secure the bracket to the valve body, leave bracket in unit.
4. Remove valve and tube.

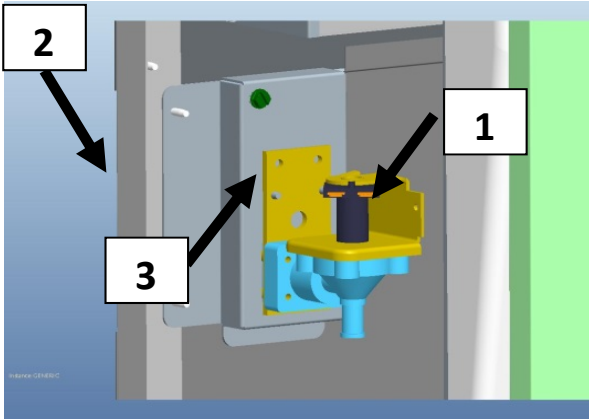
Install New Valve



1. Install fitting and clear vinyl tube to inlet fitting.
2. Install new valve to service bracket.(outside the unit)
3. Insert vinyl tubing into John Guest fitting and secure to existing water inlet valve bracket with two screws.
4. Reconnect electrical plug on coil.

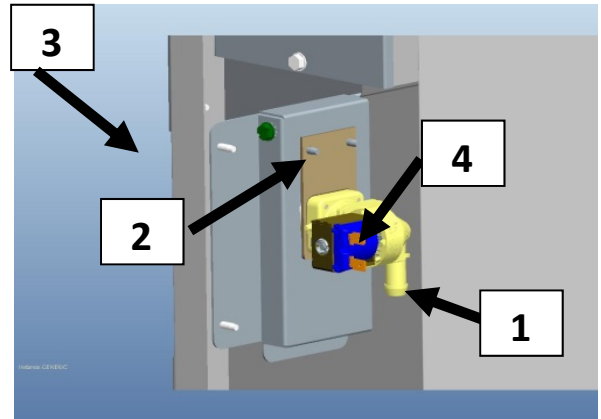
## S-Models IB's

### Remove Original Valve



1. Unplug electrical plug from coil.
2. Remove water line from 3/8" NPT fitting on back side of unit.
3. Remove screws from valve and remove valve.

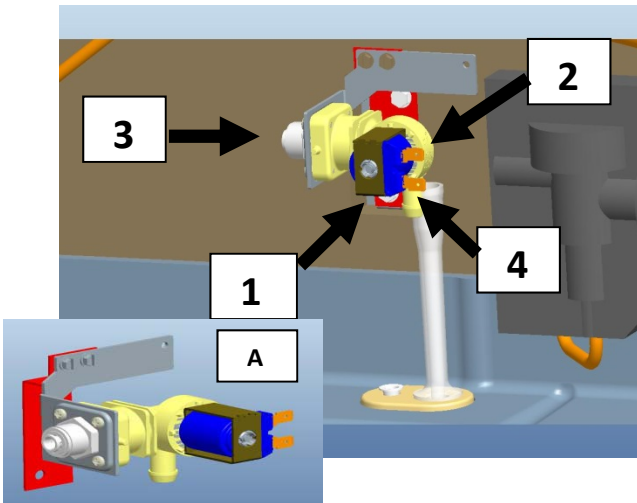
### Install New Valve



1. Install new valve into water inlet tube.
2. Install valve in ice machine
3. Reconnect water line to 3/8" NPT fitting.
4. Reconnect electrical plug to coil.

## S1470/1870/2070/2170

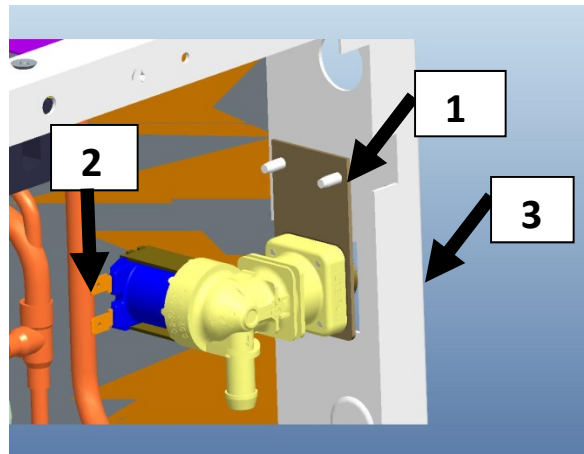
### Install New Valve



1. Install supplied service bracket to panel (ex A)
2. Install new valve to service bracket.
3. Insert vinyl tubing into John Guest fitting
4. Reconnect electrical plug on coil.

## Q-Models:

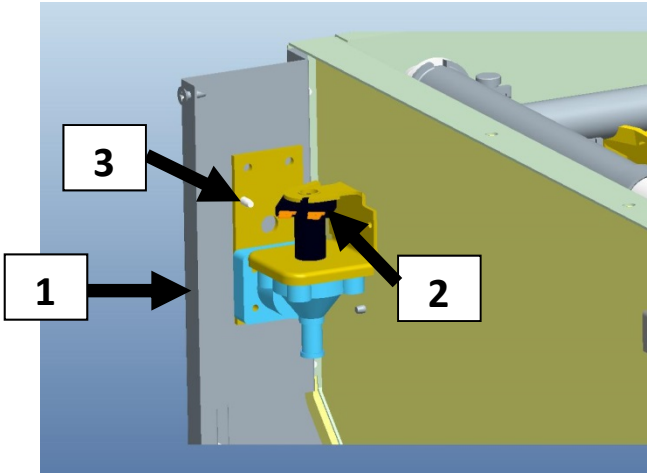
### Install New Valve



1. Insert valve into water tube and install two screws.
2. Insert electrical plug on coil
3. Reconnect water line to 3/8" NPT fitting.

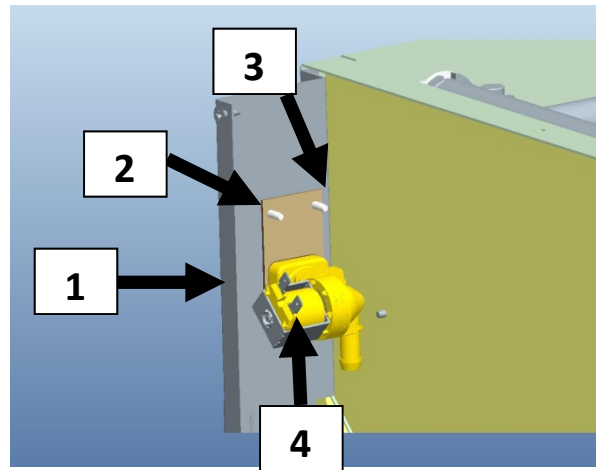
## Q-Duals:

### Remove Original Valve



1. Remove water line from 3/8" NPT fitting on back side of unit.
2. Unplug electrical plug from coil.
3. Remove two screws from bracket and valve from water tube.

### Install New Valve



1. Drill both valve mounting holes to 1/2".
2. Insert valve outlet in water tube and install two screws with flat washers.
3. Valve must be positioned as far in as possible.
4. Reconnect electrical plug on coil.