

# Part No. 4518 Installation Instructions

## STEP 1

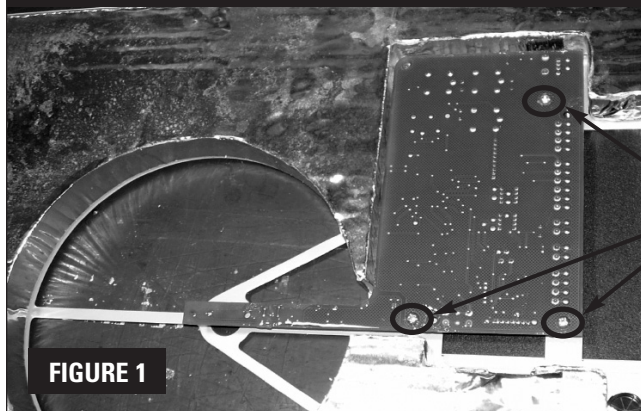


FIGURE 1

The following instructions are for replacing a control board in the dehumidifier with the new two piece control and sensor board (service part 4518).

- A. Remove the (3) mounting screws from the control board. (See **Figure 1**)
- B. Disconnect the ribbon cable from the control board.
- C. Disconnect the (2) frost sensor terminals from the control board.

## STEP 2

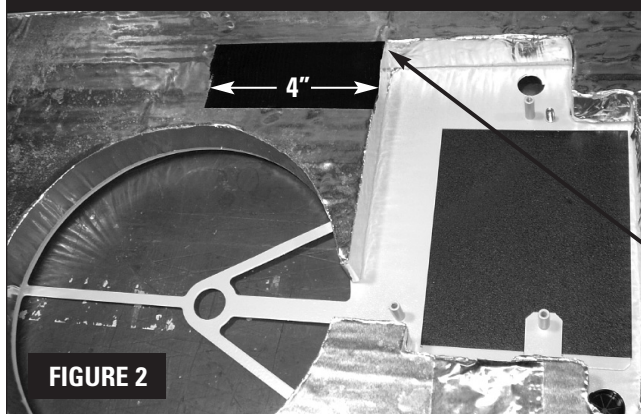


FIGURE 2

If replacing a control board from a Model 1700 or 1720, complete the following steps otherwise continue to STEP 3.

- A. Add a minimum of 4 inches of "non-conductive tape" to the inside of the inlet panel. (See **Figure 2**)  
*Example: Black Electrical Tape*
- B. Make sure the top edge of the tape lines up with the top edge of the foam cutout. (See **Figure 2**)

**Note:** This is the area where the new style sensor board will protrude from the control board.

**DO NOT USE ALUMINUM TAPE!**

## STEP 3

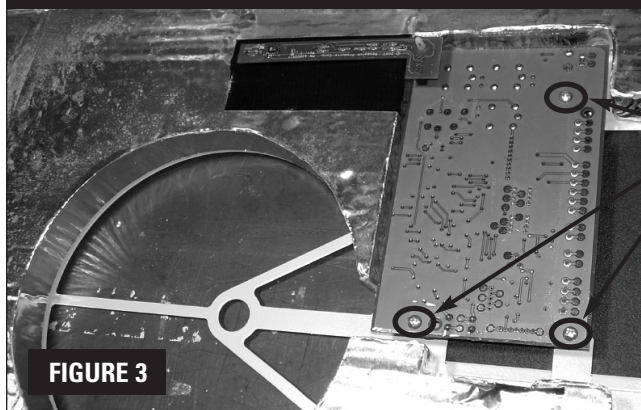


FIGURE 3

Attach new control and sensor boards.

- A. Place the new control and sensor board into the opening and insert the (3) mounting screws. (See **Figure 3**)
- B. Reconnect the ribbon cable and (2) frost sensor terminals back into the board.