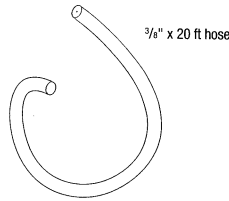
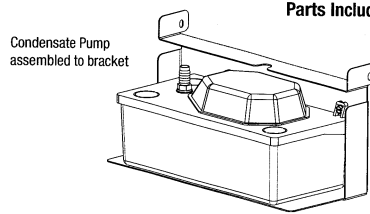


Pump Kit

Part No. 4030113

Parts Included:



Tools Required: T-20 TORX, 5/16 Hex Socket, Phillips Screw Driver, Utility Knife

Tools required will vary depending on model of unit. Additional Materials will be needed to elevate dehumidifier.

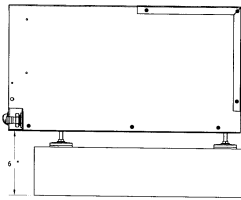
CAUTION! Before installing pump kit, disconnect dehumidifier from electrical power and disconnect drain hose if previously installed.

Note: The (2) white wires located at the top of the condensate pump are overflow safety trip wires (optional). These wires are not live or hot wires until connected to the dehumidifier or another automatic cut off device. Only a certified electrician is qualified to connect the safety trip wires to your Therma-Stor dehumidifier. Attaching the overflow safety trip wires to your Therma-Stor dehumidifier will cut power to the dehumidifier if the pump motor should fail and the secondary float switch trips (this process is optional and not necessary on every install). You may also use other low voltage (24 volt) cut off devices that do not involve an electrician. Please contact Therma-Stor if you have any additional questions.

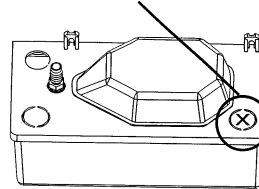
Step 1. Elevate unit 6" in height.

Note: Feet can only provide 2 1/2" height. Extra lift to be provided by installer.

CAUTION! The pump and bracket are not designed to support the weight of the unit. Do not allow the unit to rest on the pump and mounting bracket after it is installed.



Step 2. Knock inlet hole out of the condensate pump in the location shown.



OVER

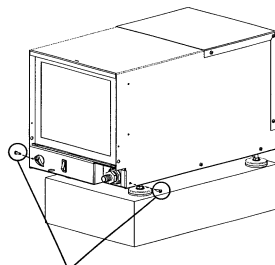


Therma-Stor LLC

Driven by performance. Powered by design.™

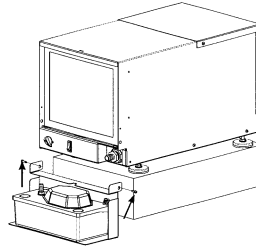
4201 Lien Rd., Madison, WI 53704 • TOLL-FREE 1-800-533-7533 • www.thermastor.com • sales@thermastor.com
TS-4256

Step 3. Using a screwdriver, remove two screws located on the side of the unit as shown.



Remove these screws.

Step 4. Attach the condensate pump assembly using the two screws as shown. Do not over tighten the screws.

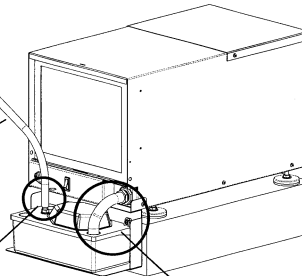


Step 5. Attach the hoses as shown.

Route to drain

Install the smaller (3/8") drain hose onto the barbed outlet fitting of the condensate pump. Verify hose is secured tightly to condensate pump by pulling gently on hose. Route hose appropriately to a drain.

Note: Do not exceed 10 ft. vertically when pumping to a drain above the unit.



Using the original (5/8") product hose, cut to approximately 6" in length and route to the condensate pump as shown. Insert hose half way into the condensate pump. Do not push hose to the bottom of the condensate pump.

Step 6. Plug the pump and dehumidifier cords into an outlet that is protected with a GFCI device on its circuit.



Therma-Stor LLC

Driven by performance. Powered by design.™

4201 Lien Rd., Madison, WI 53704 • TOLL-FREE 1-800-533-7533 • www.thermastor.com • sales@thermastor.com